

# JACKSONVILLE



**SCCR**

The 48th Annual  
Meeting of The Society  
for Cross-Cultural Research



**FEBRUARY  
13-16, 2019**





# *Society for Cross-Cultural Research*

The Society for Cross-Cultural Research was founded in 1971, and the first conference was convened in February, 1972. Since that time, SCCR has gathered early each year at conferences that provide an excellent space for developing and maintaining professional and personal relationships, discussing new ideas and scholarships, and create productive collaborations.

I was lucky enough to attend my first SCCR conference in Santa Fe, New Mexico in February of 2005. Since then, I've only missed two, making this my twelfth SCCR conference—a number I hope gets much larger! During the last dozen years, I've been inspired by many SCCR members and attendees, and become friends and professional colleagues with many of them. I've been able to witness folks who first attended as students (like I did) who are now tenured faculty members conducting cutting-edge scholarship. I'm confident that this year's conference will be just as successful for all of us on both professional and personal levels.

At this year's conference, we're lucky to be joined by Division 52 (International Psychology) of the American Psychological Association. They have submitted posters and papers that will be presented during the conference, and we're excited that we have so many breakout sessions that will include the work of both SCCR members and Div. 52 members. I hope folks from both organizations will take advantage of the chance to network and talk to new potential colleagues and collaborators. And thank you to Division 52 for sponsoring our coffee break on Thursday afternoon!

Organizing a conference is a huge task that, at times, can feel like it's sucking away all of your time and energy. But one of the things that make the work worth doing is the people you get to work with while doing it. There is no way I could have put together what I think is a fantastic conference and program with the other two members of the conference committee: Carrie Brown (the program committee chairperson) and Amanda Faherty (the student committee chairperson). Both of them have put in hours of work on this conference and program, so when you see them, please thank them!

The invigorating and exciting program you see here was created by Carrie Brown and the other members of her program committee who reviewed many paper and poster submissions. They are Judith Gibbons and Katelyn Poelker (both of whom represented our conference colleagues from Division 52 of the American Psychological Association), as well as Amanda Faherty, Abigail Camden, Aileen Garcia, Peter Peregrine, and Maria Rosario de Guzman. A huge thank you to all of them! Finally, I want to recognize Hobart & William Smith Colleges and Division 52 for providing generous financial support, Laura Sposato (the HWS Psychology Department Administrative Assistant) and her team for their help with marketing and putting together this program, and Jeremy Trumble and his team in IT at HWS for their amazing work on the conference website.

I hope you'll take the time to come and find me to say hello! I already feel like I know so many of you from previous conferences or from planning this year's conference that I don't want to miss the chance to chat with anyone! Thank you again for attending the 48th annual SCCR conference and the Division 52 Mid-Winter Meeting!

Brien K. Ashdown (SCCR president-elect and conference organizer)



# 2019 SCCR Officers

Alyssa Crittenden  
President  
Department of Anthropology, University of Nevada, Las Vegas

Brien K. Ashdown  
President-elect  
Department of Psychology, Hobart & William Smith Colleges

Jill Brown  
Past-President  
Department of Psychology, Creighton University

Denise Lewis  
Vice-President  
Department of Human Development and Family Science, University of Georgia

Ted Bartholomew  
Secretary  
Department of Education, Purdue University

Casey Roulette  
Newsletter Editor  
Department of Anthropology, San Diego State University

Herbert Barry  
Parliamentarian and Archivist  
Professor Emeritus, University of Pittsburgh

Lisa Oliver  
Treasurer  
Department of Counselor Education, San Jose State University

Helen Elizabeth Davis  
Webmaster  
Department of Human Evolutionary Biology, Harvard University

Sarah Almalki  
Student and Media Rep  
Department of Human Development and Family Science, University of Missouri

## Area Representatives

### **Psychology**

Maria Rosario de Guzman  
Child, Youth, & Family Studies  
University of Nebraska

### **Social Science**

Aileen Garcia  
Department of Counseling &  
Human Development  
South Dakota University

### **Anthropology**

Peter Peregrine  
Department of Anthropology  
Lawrence University

# Division 52 Officers

## **President 2019**

Nancy Sidun, Psy.D.  
Tippler Medical Center, Honolulu, Hawaii  
Email: n.sidun@hawaiiantel.net

## **Past President 2019**

Merry Bullock, Ph.D.  
Consultant, Ahimsa International  
Email: merrybullock@mac.com

## **President Elect 2019**

Brigitte Khoury, Ph.D.  
American University of Beirut, Lebanon  
Email: bk03@aub.edu.lb

## **Interim Secretary, 2018-2019**

Michele Ribeiro, Ed.D., CGP  
Oregon State University  
Email: michele.ribeiro@oregonstate.edu

## **Treasurer, 2018-2020**

Martha Zlokovich, Ph.D.  
Psi Chi International  
Email: martha.zlokovich@psichi.org

## **Vice President for Communication, 2017-2019**

Stefania Ægisdóttir, Ph.D.  
Ball State University  
Email: stefaegis@bsu.edu

## **Vice President for Initiatives, 2017-2019**

Ani Kalayjian, Ed.D.  
Meaningful World  
Email: DrKalayjian@meaningfulworld.com

## **Vice President for Engagement, 2019-2021**

Lynette Bikos, Ph.D.  
Seattle Pacific University  
Email: lhbikos@spu.edu

## **Early Career Psychologist Committee Chair, 2019**

Kate Poelker, Ph.D.  
Hope College  
Email: poelker@hope.edu

## **Student Committee Chair, 2019-2020**

Adetutu Ajibose  
William James College  
Email: adetutu\_ajibose@williamjames.edu

## **Student Committee Chair-Elect, 2019-2020, *Ex Officio***

Ankita Nikalje  
Purdue University  
Email: anikalje@purdue.edu

## **Council Representative, 2019-2020**

Neil Rubin, Ph.D., ABPP  
Illinois School of Professional Psychology  
Argosy University  
Email: nealrubin@hotmail.com

## **Journal Editor, *Ex Officio***

Stuart Carr, Ph.D.  
Massey University  
Email: S.C.Carr@massey.ac.nz

## **Newsletter Editor, *Ex Officio***

Irene Lopez, Ph.D.  
Kenyon University  
Email: lopezi@kenyon.edu

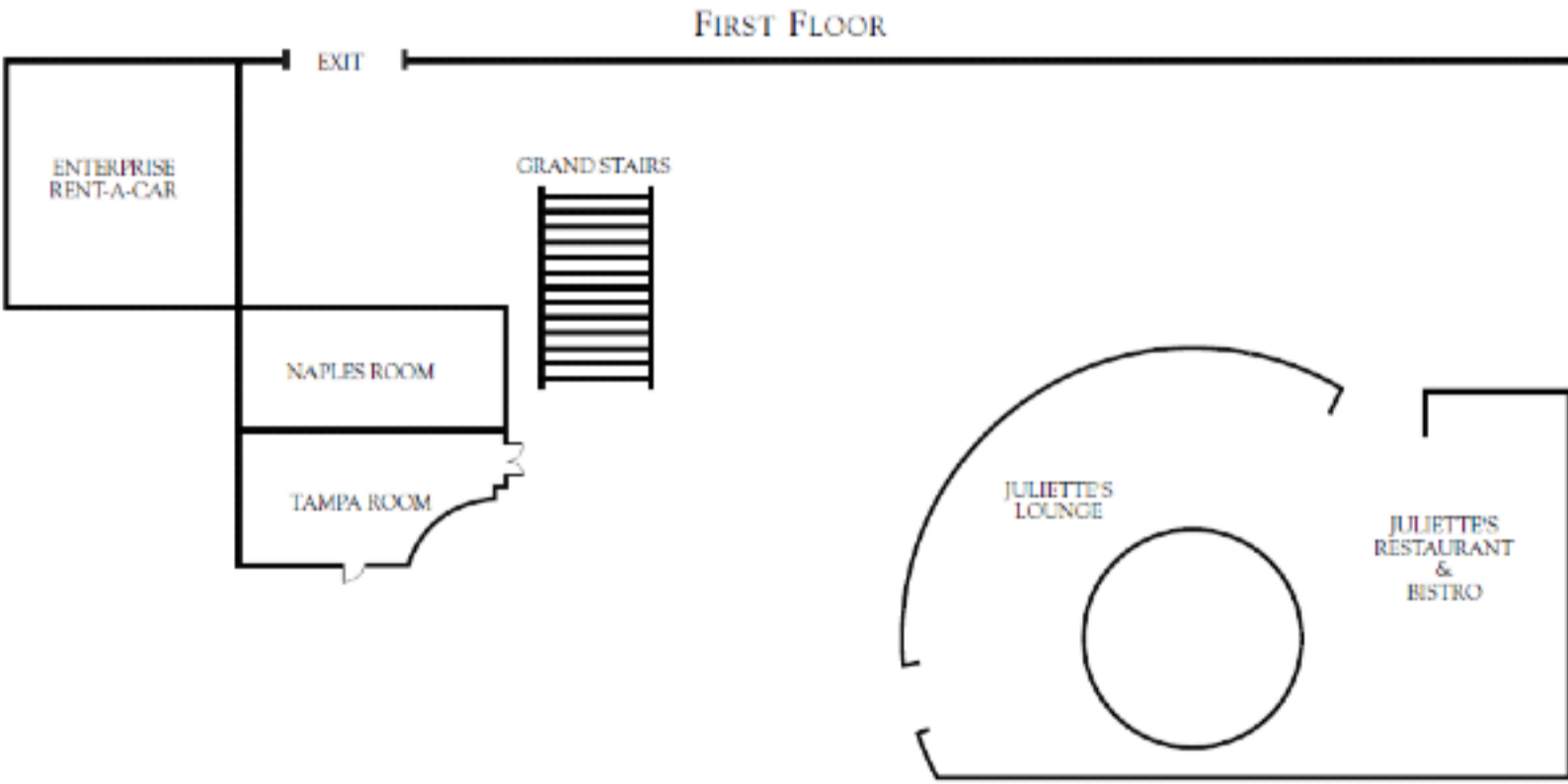
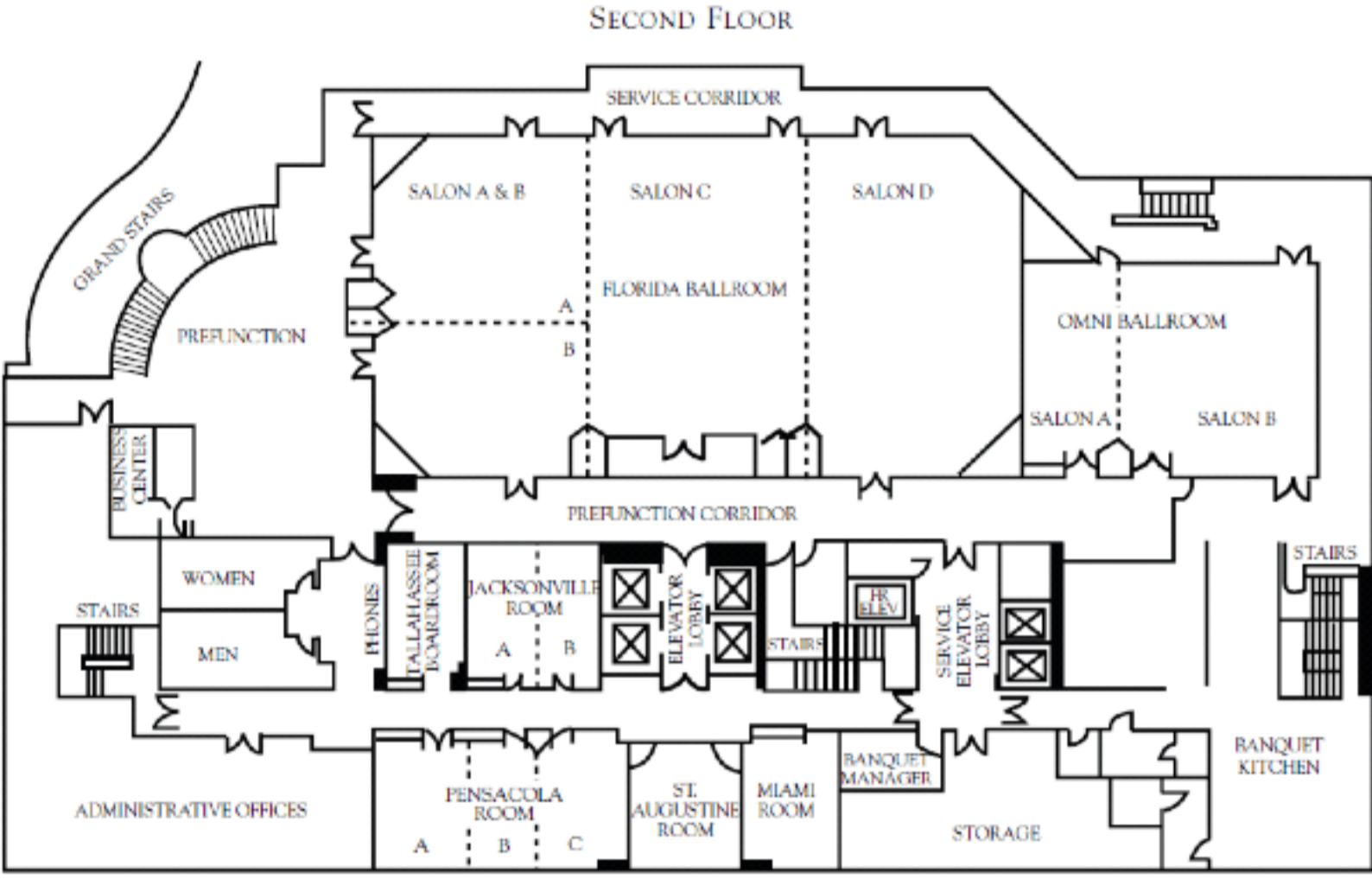
## **Parliamentarian, *Ex Officio***

Lynn Collins, Ph.D.  
Rollins College  
Email: lynncollins@gmail.com





# Conference Hotel Map



# Keynote Speakers

## **Gary Sass**

AdLib Luxury Tours

### **The History and Culture of Jacksonville**

Wednesday, February 13, 2019 at 7:00pm

Florida Salon C & D



Gary Sass is a local historian, entrepreneur and story teller that has been featured in magazines and on television for his personalized tours. He is President of AdLib Luxury Tours and Active Escapes DMC. Sass personally conducts over 80 different tours in North Florida. His Jacksonville Walking Tour program is ranked #1 on Trip Advisor. Sass was honored twice by the North Florida Hotels Association with a ROSE award for Service Excellence. He also received a Preservation Service Award from the Jacksonville Historic Commission. Sass is a member of the St. Augustine Historical Society, Jacksonville Historical Society and Jacksonville Chamber of Commerce.

## **Sarah D. Herrmann**

Weber State University

### **Crossing Classes: A Cultural Perspective of First-Generation College Students' Performance and Persistence**

Thursday, February 14, 2019 at 9:00am

Florida Salon C & D

More first-generation college (FGC) students are enrolling than ever before, but these students continue to have poorer performance and persistence than their continuing-generation (CGC) counterparts. This social class achievement gap persists even after controlling for students' demographic backgrounds and past academic performance, suggesting that differences during college are as important as difference before college in predicting outcomes for FGC students. Namely, while many theories have studied academic performance for first-generation students, few have taken into account the cultural transition to the university context. An emerging body of research examines the ways that low-income and first-generation students must adjust to the culture of the university and face challenges negotiating different cultural identities. In this address, I will discuss the ways that we can use a cultural lens to understand the transition to college for first-generation and low-income students. Additionally, I will explore individual and systemic interventions that utilize culture to improve FGC students' performance and persistence.





# Keynote Speakers

**Julie Ann Washington**

Georgia State University

**The Impact of Cultural Dialect  
on Reading and Writing**

Thursday, February 14, 2019 at 4:30pm

Florida Salon C & D

The impact of cultural language differences on learning to read is well-documented. Cultural dialects that differ from the mainstream language standard can influence reading and writing acquisition. Specifically, the density with which children use a cultural dialect has been shown to slow down the development of both reading and writing. Sometimes called linguistic distance, it has been demonstrated across languages that the further away a child is from the spoken standard the more likely it is that he/she will struggle with reading and writing development. African American English (AAE) is the most widely studied dialect of American English. Children who are high users of AAE have been found to struggle with reading, spelling, writing and oral language development, as high dialect use represents a significant distance from the spoken and written standard. These disparities in reading acquisition are increased when children are also growing up in poverty. This session will utilize AAE as an example of an oral dialect whose use influences the rate and overall growth of reading skills among its users.



**Deborah L. Best**

Wake Forest University

**Culture in the Classroom:  
Surprising Students with Realities  
of the Global World**

Friday, February 15, 2019 at 9:00am

Florida Salon C & D

Millennials may be more aware of global aspects of today's world than were past generations, but they often do not think about how culture affects their every day lives. Indeed, much of current research in the social sciences continues to be conducted using WEIRD populations, with the underlying assumption that there are no important differences in people and their behaviors around the globe. Weaving culture into teaching can expand students' awareness of cultural practices within different ecological frameworks, perhaps increasing students' appreciation of the complexity of human behavior. Indeed, cultural and developmental processes are constantly intertwined, and the enculturation and socialization of children are fundamental means of cultural transmission across all societies. Given that children are perhaps the world's most important resource and they literally are the future, it is important to understand the relation between culture and human development. Ways to add culture to teaching psychology courses, particularly focusing upon developmental processes, will be discussed.



# Events at a Glance

---

## Wednesday, February 13, 2019

4:00pm - 7:00pm	Registration	Pre-Function Room
7:00pm - 7:30pm	Opening Keynote Gary Sass The History and Culture of Jacksonville	Florida Salon C & D
7:30pm - 10:00pm	Opening Social Open Bar Beer & Wine	Florida Salon C & D

---

## Thursday, February 14, 2019

8:00am - 8:45am	Executive Committee Meeting	Tallahassee Room
9:00am - 9:45am	Keynote Sarah Herrmann First-Generation College Students	Florida Salon C & D
10:00am - 4:15pm	Breakout Sessions	
11:30am - 1:00pm	Lunch	
2:30pm - 2:45pm	Coffee Break Sponsored by Division 52 of APA	Pre-Function Room
4:30pm - 5:30pm	Keynote Julie A. Washington The Impact of Cultural Dialect	Pre-Function Room
6:00pm - 7:00pm	Student Happy Hour Sponsored by Hobart & William Smith Colleges Element Bistro & Craft Bar 333 E. Bay Street	



# Events at a Glance

---

## Friday, February 15, 2019

8:00am - 8:45am	Executive Committee Meeting	Tallahassee Room
9:00am - 9:45am	Keynote Deborah Best Culture in the Classroom	Florida Salon C & D
10:00am - 4:15pm	Breakout Sessions	
11:30am - 1:00pm	Lunch	
4:30pm - 5:30pm	SCCR General Business Meeting All SCCR Members Invited!	Pensacola Room
5:30pm - 6:45pm	Poster Session and Cash Bar	Pre-Function Room and Florida Salon C & D
7:00pm - 10:00pm	SCCR Banquet and Presidential Address	Florida Salon C & D

---

## Saturday, February 16, 2019

9:00am - 10:15am	Mentor and Network Breakfast (Pre-registration Required)	Florida Salon A & B
10:30am - 12:00pm	Conversation Hours and Workshops	
Available starting at 8:00am	Division 52 Executive Committee Meeting	Florida Salon D



## SCCR Student Happy Hour

Thursday February 14, 2019

6:00-7:00 pm

Element Bistro & Craft Bar

333 E. Bay Street, Jacksonville, FL

**Free drink tickets & appetizers will be provided!**

Please RSVP to Amanda at [afaherty@clarku.edu](mailto:afaherty@clarku.edu)

---

# Detailed Conference Schedule

Wednesday, February 13, 2019

Registration in the Pre-Function room from 4:00pm until 7:00pm

## Opening Keynote:

**Gary Sass of AdLib Luxury Tours**  
**The History and Culture of Jacksonville**

Wednesday, February 13, 2019 at 7:00pm  
Florida Salon C & D

Gary Sass is a local historian, entrepreneur and story teller that has been featured in magazines and on television for his personalized tours. He is President of AdLib Luxury Tours and Active Escapes DMC. Sass personally conducts over 80 different tours in North Florida. His Jacksonville Walking Tour program is ranked #1 on Trip Advisor. Sass was honored twice by the North Florida Hotels Association with a ROSE award for Service Excellence. He also received a Preservation Service Award from the Jacksonville Historic Commission. Sass is a member of the St. Augustine Historical Society, Jacksonville Historical Society and Jacksonville Chamber of Commerce.

## Opening Social with Open Bar

**7:30pm - 10:00pm**

**Come enjoy some drinks with your SCCR and Div. 52 friends!**



# Detailed Conference Schedule

Thursday, February 14, 2019


Registration and Continuing Education in the Pre-Function Room  
8:30am until 4:00pm

Time	Event	Room
9:00am-9:45am	Morning Keynote by Sarah Herrmann of Weber State University: <i>Crossing Classes: A Cultural Perspective of First Generation College Students' Performance and Persistence</i>	Florida Salon C & D
10:00am-11:30am	<h2>Breakout Sessions</h2> <p>See page 20 for details about each session</p>	
	Parenting and Families	Florida Salon B
	Children and Adolescents: Culture's Role in Development	Florida Salon A
	Education Abroad	Jacksonville
	Crowdsourcing Cross-Cultural Research: Opportunities for Students, Collaboration, and the Classroom	St. Augustine
	Counseling and Therapy	Pensacola

# Detailed Conference Schedule

Thursday, February 14, 2019

Registration and Continuing Education in the Pre-Function Room  
8:30am until 4:00pm



Time	Event	Room
11:30am-1:00pm	Lunch	
1:00pm-2:30pm	Breakout Sessions <small>See page 21 for details about each session</small>	
	Disaster Resilience Data Gathering in Gulf Coast Immigrant Populations: Preliminary Findings	Florida Salon B
	Cognitive Processes – Part One	Florida Salon A
	Rituals, Customs, Traditions, Practices – Part One	Jacksonville
	Competencies for Engaging Internationally: Developing Standards for Behavioral Science Research, Education and Consultation	St. Augustine
<b>HAPPY VALENTINE'S DAY</b> ♥	Hunter-Gatherer Societies	Pensacola



# Detailed Conference Schedule

Thursday, February 14, 2019


Registration and Continuing Education in the Pre-Function Room  
8:30am until 4:00pm

Time	Event	Room
2:30pm-2:45pm	Coffee Break Sponsored by Division 52 of APA Pre-Function Room	
2:45pm-4:15pm	<b>Breakout Sessions</b> See page 22 for details about each session	
	Romantic Relationships, Marriage, Cohabitation	Florida Salon B
	Cognitive Processes – Part Two	Florida Salon A
	Rituals, Customs, Traditions, Practices – Part Two	Jacksonville
	Applications of International Psychology as Demonstrated in Cultural and Trauma Research	St. Augustine
	Mothers and Parenting	Pensacola

# Detailed Conference Schedule

Thursday, February 14, 2019

Registration and Continuing Education in the Pre-Function Room  
8:30am until 4:00pm

Time	Event	Room
4:30pm-5:30pm	Afternoon Keynote by Julie A. Washington of Georgia State University: <i>The Impact of Cultural Dialect on Reading and Writing</i>	Florida Salon C & D
6:00pm-7:00pm	Student Happy Hour Sponsored by Hobart & William Smith Collges	



# Detailed Conference Schedule

Friday, February 15, 2019

Registration and Continuing Education in the Pre-Function Room  
8:30am until 4:00pm

Time	Event	Room
9:00am-9:45am	Morning Keynote by Deborah L. Best of Wake Forest University: <i>Culture in the Classroom: Surprising Students with Realities of the Global World</i>	Florida Salon C & D
10:00am-11:30am	<h2>Breakout Sessions</h2> <p>See page 23 for details about each session</p>	
	Adolescence	Florida Salon B
	Infusing International Perspectives within APA	Florida Salon A
	A Panel Session: Popular Culture, Ethnic Culture, Media Representations, Identity Conflicts and Cross-cultural Implications in Korea and China	Jacksonville
	Women and Men's Well-being	Pensacola
	"In Memory of.....": Remembering Carolyn Pope Edwards and a Discussion of How Relationships Shape Us as Scholars	St. Augustine

# Detailed Conference Schedule

Friday, February 15, 2019

Registration and Continuing Education in the Pre-Function Room  
8:30am until 4:00pm

Time	Event	Room
11:30am-1:00pm	Lunch	
1:00pm-2:30pm	Breakout Sessions <small>See page 24 for details about each session</small>	
	Advances in Cultural Research Methodologies	Florida Salon B
	Ethical Considerations in Trauma Research and the Sensitivity of Qualitative Methodology	Florida Salon A
	Panel Discussion in Remembrance of Robert Lee Munroe	Jacksonville
	Youth	St. Augustine
	Immigration, Migration, Acculturation	Pensacola



# Detailed Conference Schedule

Friday, February 15, 2019

Registration and Continuing Education in the Pre-Function Room  
8:30am until 4:00pm

Time	Event	Room
2:30pm-2:45pm	Social Break Pre-Function Room	
2:45pm-4:15pm	<b>Breakout Sessions</b> See page 25 for details about each session	
	Higher Education, Teaching	Florida Salon B
	Human Trafficking: Rarely Acknowledged or Recognized	Florida Salon A
	Assessing the Psychological Impact of Community-Level Interventions: How Might One Meaningfully Compare Measures Taken at Different Times and Places?	Jacksonville
	Emerging Adulthood	St. Augustine
	Identity and the Self	Pensacola

# Detailed Conference Schedule

Friday, February 15, 2019

Registration and Continuing Education in the Pre-Function Room  
8:30am until 4:00pm

Time	Event	Room
4:30pm-5:30pm	SCCR General Business Meeting  All SCCR Members Invited!	Pensacola
5:30pm-6:45pm	Poster Session and Cash Bar  (SCCR Members and Div. 52 Members will get 1 free drink)	Pre-Function and Salon C & D
7:00pm-10:00pm	SCCR Banquet and Presidential Address  (Cash Bar Continues)	Salon C & D

# Detailed Conference Schedule

Saturday, February 16, 2019

Registration and Continuing Education in the Pre-Function Room  
8:30am until 10:00am

Time	Event	Room
9:00am-10:15am	Mentor and Network Breakfast  (Pre-registration Required: See Registration for more information)	Salon A & B
	10:30am-12:00pm	Workshops and Conversations Hours
	Division 52 Executive Committee Meeting	Florida Salon D
	Collaboration Networking Session: Connect With Other Scholars Looking for Collaborators	Jacksonville
	Redefining Global Mental Health and Well-being Through International Psychology Framework	St. Augustine
	How to Publish Your Thesis or Dissertation in an International Journal	Pensacola



# Thursday Presentations: 10:00am-11:30am

## **Parenting and Families**

**Room: Florida Salon B**

Chair: Elif Dede Yildirim

1. *Perceived Parental Undifferentiated Rejection and Children's Negative Personality Dispositions: A Meta-analysis of Multi-Cultural Studies* – Abdul Khaleque, Mosammat Nazma Khatun, Sumbleen Ali, and Ronald P. Rohner
2. *The Links between Maternal and Paternal Responsiveness, Hostile Parenting, and Children's Language Skills* – Elif Dede Yildirim
3. *Interdependence as a Mediator of Parenting Practices and Prosocial Behavior in Turkish Youth* – Joy Roos, Logan Dicus, Zehra Gulseven, Gustavo Carlo, Duane Rudy, and Asiye Kumru
4. *Intervening Mechanisms on the Association between Sibling Support and Prosocial Behavior Among U.S. Latino/a College Students* – Sarah Pierotti, Samantha K. Jones, Gustavo Carlo, and Sarah A. Killoren

## **Children and Adolescents: Culture's Role in Development**

**Room: Florida Salon A**

Co-Chairs: Katelyn E. Polker and Deborah L. Best

Discussant: Judith L. Gibbons

1. *The Culture of Play: Ethnic and Cross-cultural Differences in Playground Interactions* – Amanda Davis, Deborah L. Best, and Caitlin Bush
2. *Adolescents' Ideal Person: Perspectives from Estonia, Guatemala, and the United States* – Tiia Tulviste, Judith L. Gibbons, Katelyn E. Poelker, Anni Tamm, Trevor Sooy, and Ashley Stegenga
3. *Be Yourself: Identity Development in Guatemalan Youth* – Judith L. Gibbons, Katelyn E. Poelker, Kathleen Serverian-Wilmeth, Sydney R. Hudock, and Jana Sahyouni
4. *How Cultural Contexts Impact the Diagnosis and Treatment of Autism* – Kelly Buchanan and Deborah L. Best

## **Education Abroad**

**Room: Jacksonville**

Chair: Megan Blanchfield

1. *Education Abroad: Linking Teaching/Learning to the Host Culture* – Ginny Q. Zhan
2. *Enhancing Cross-Cultural Competence: Outcome of an Immersion Course in Iceland -- Stefania Aegisdottir*
3. *Adaptation of Foreign Students in Tallinn (Estonia)* – Anastassia Zabrodskaia
4. *Effect of developing a Global Perspective and a Cultural Identity on Students' Social and Health Behaviors while Studying Abroad* – Megan Blanchfield, Leland Barclay, and Brien K. Ashdown

## **Conversation Hour: Crowdsourcing Cross-Cultural Research: Opportunities for Students, Collaboration, and the Classroom**

**Room: St. Augustine**

Participants: Kelly Cuccolo, Mary Moussa Rogers, and Leslie Cramblet Alvarez

Chair: Martha Zlokovich

## **Counseling and Therapy**

**Room: Pensacola**

Chair: Ted Bartholomew

1. *Integrating Cultural Beliefs into Counseling with Refugees: What's Being Done and What Can be Improved* – Ted Bartholomew, Brittany E. Gundel, Ellice Kang, Eileen E. Joy, Serio Maldonado, and Krista Robbins
2. *Researching the Benefits of Tree-of-Life Therapy for Refugee and Asylum-Seeking Youth* – Deborah A. Stiles, Kelly A. Brown, and Rhonda G. Bluehen-Unger
3. *Post Trauma Healing Across Cultures: Utilizing Forgiveness and Meaning-Making* – Ani Kalayjian
4. *Using Eastern Traditions to Inform Self-Care Practices for Social Workers* – Matthew Diner

# Thursday Presentations: 1:00pm-2:30pm

## ***Disaster Resilience Data Gathering in Gulf Coast Immigrant Populations: Preliminary Findings***

**Room: Florida Salon B**

Co-Chairs: Denise C. Lewis, Desiree M. Seponski, and Sarah E. DeYoung

1. *Levels and Concepts of Disaster Preparedness and Evacuation from Quantitative and Qualitative Data* – Sarah E. DeYoung, Monysakada Phal, Desiree M. Seponski, and Denise C. Lewis
2. *Challenges and Success of a Disaster Preparedness Survey Administered in Cambodian and Laotian American Communities* – Monysakada Phal, Sarah E. DeYoung, Denise C. Lewis, and Emily Overmyer
3. *Environmental Disasters, Environmental Justice, and the Cambodian and Laotian Communities: Long-term Vulnerability Reinforced by Short-term Hazard Planning* – Danielle A. Augustine, Sarah E. DeYoung, Denise C. Lewis, and Johanna Mercurio
4. *Providers' and Employers' Interactions with Coastal Cambodian and Laotian Communities* – Emily Overmyer, Vidisha Gangidi, and Denise C. Lewis
5. *Lessons of Resilience within a Life History* – Raul Basilio and Denise C. Lewis

## ***Cognitive Processes – Part One***

**Room: Florida Salon A**

Chair: Tracy Alloway

1. *Is it a Small World After All? Investigating IQ and Working Memory Cross-Nationally* – Tracy Alloway, Kate Cockcroft, Debora Burin, Irene Injoque-Ricle, Maria Chiara Passolunghi, Flávia Heloísa Dos Santos, and Lisa M. D. Archibald
2. *Creativity Across Five Countries* – C. Dominik Guess
3. *"Oh no, the forest is burning!" Differences in Complex Problem-Solving Steps assessed with Thinking Aloud Protocols in Five Countries* – Willow Clem, Yoannis Hermida, and C. Dominik Guess
4. *Lead or mislead? Investigating the Impact of Cultural Individualism-Collectivism on a False Memory Creation* – Patricia Maciaszek

## ***Rituals, Customs, Traditions, Practices – Part One***

**Room: Jacksonville**

Chair: Pablo Chavajay

1. *Egyptian Rearing Practices: Takafol and Observance of Family Rituals* – Hani M. Henry and Mai Elwy
2. *Magic Beliefs and Folk Medicine: Etiology of Illness and Causes of Adverse Events in the Russian Northwest Rural Areas* – Olga Levitski, Svetlana Adonyeva, and Aynur Tremblay
3. *Children's Engagement in Cultural Practices According to Guatemalan Tz'utujil Maya Grandmothers and Mothers* – Pablo Chavajay and Cathy Angelillo
4. *Role of Urbanization in Indigenous Parenting Values: Environmental Limitations Dictate Parenting Traditions Passed on to Young Children* – Nokwanda Ndlovu and N. Grava

## ***Conversation Hour: Competencies for Engaging Internationally: Developing Standards for Behavioral Science Research, Education and Consultation***

**Room: St. Augustine**

Participants and Co-Chairs: Merry Bullock and Amanda Clinton

## ***Hunter-Gatherer Societies***

**Room: Pensacola**

Chair: Alyssa N. Crittenden

1. *Foragers and Food Production in Africa: A Cross-Cultural and Analytical Perspective* – Robert K. Hitchcock
2. *Playing Gender, Learning Culture among BaYaka and Hadza Hunter-Gatherer Children in the Republic of Congo and Tanzania* – Sheina Lew-Levy, Adam H. Boyette, Alyssa N. Crittenden, Barry S. Hewlett, and Michael E. Lamb
3. *Co-sleeping Practices among Hadza Hunter-Gatherers: Towards a Cross-Cultural Understanding of Maternal Sleep Quality among Habitually Co-sleeping Mothers* – Alyssa N. Crittenden, David R. Samson, Kristen N. Herlosky, and James J. McKenna
4. *Fatherhood, Egalitarianism, and Child Health in Republic of the Congo* – Adam Howell Boyette, Sheina Lew-Levy, Mallika Sarma, Valchy Miegakanda, and Lee T. Gettler
5. *Rethinking Agriculture and Childhood Growth Trajectories: Lessons from the Hadza of Tanzania* – Trevor Pollom, Chad Cross, and Alyssa N. Crittenden

# Thursday Presentations: 2:45pm-4:15pm

## ***Romantic Relationships, Marriage, Cohabitation***

**Room: Florida Salon B**

Chair: Karel Karsten Himawan

1. *Being Single in a Marriage Preoccupied Society: An Exploratory Examination of the Reasons and Coping Strategies for Indonesian Never-Married Adults* – Karel Karsten Himawan, Matthew Bambling, Sisira Edirippulige, and Mair Underwood
2. *Role of Transnational Living on Relationship Quality among Ghanaian Immigrants* – Rodlyn Yafetto and D. Bruce Carter
3. *Trapping in Socio-economic, Legal and Self Marginalization: The Case of Females Survived by their Intimate Partner's Violence Occurred in Cohabitation Unions* – Chu-Li Liu

## ***Cognitive Processes – Part Two***

**Room: Florida Salon A**

Chair: Benjamin Uel Marsh

1. *Briefly Exposing Bilingual Latino-Americans to Spanish Facilitates More Fixations towards Latino Faces than White Faces* – Benjamin Uel Marsh, Andreas Hurtado, Zhenia Carcich, Taylor Weeks, Deborah Revenaugh, and Kathryn Engelmann
2. *Cross-Cultural Variation in Optional-Switch Cognitive Flexibility* – Sarah Pope, William D. Hopkins, Adrien Meguerditchian, David A. Washburn, and Joel Fagot
3. *How Maritime Safety is Impacted by Culture* – Carol Y. Yoder and Tuuli Messer-Bookman
4. *Variation by Gender and Culture in Assessment of Sexual Coercion-related Psychological Variables* – Darrin L. Rogers

## ***Rituals, Customs, Traditions, Practices – Part Two***

**Room: Jacksonville**

Chair: Michael Vine

1. *Rugged Individualism: Emergent Forms of Life and Death on a Climatological Frontier* – Michael Vine
2. *Cross-Cultural Studies in South Africa: A Valuable Tool for Nation Building* – Rajendran T. Govender
3. *Insight Based Philosophising of Antiquity and its Relevance to Projective Psychometric Thought Processes Particularly IQ Systems* – Sriram Balasubramanian

## ***Applications of International Psychology as Demonstrated in Cultural and Trauma Research***

**Room: St. Augustine**

Co-Chairs: Joyce Yip Green and Karen Brown

1. *Socialization Goals and Parenting Beliefs: A Study of Rwandan Infant Caregivers* – Joyce Yip Green
2. *Using International Psychology to Explore Transgenerational Trauma* – Karen Brown

## ***Mothers and Parenting***

**Room: Pensacola**

Chair: Pamela A. Schulze

1. *Cultural Orientation, Sleep, and Infant Feeding in a Sample of Chinese Mothers* – Pamela A. Schulze, Baomei Zhao, and Jason Chiang
2. *Human Maternal Placentophagy: Evolutionary Roots, Cross-cultural Occurrence, and an Emerging Post-industrial Health Trend* – Daniel C. Benyshek
3. *Physical Punishment in Taiwan- born Mothers Living in Taiwan and the U.S., and Taiwanese-American Mothers: Similarities and Differences in Practices and the Risk and Protective Factors* – Joyce Lin



# Friday Presentations: 10:00am-11:30am

## **Adolescence**

**Room: Florida Salon B**

Chair: Dawn Witherspoon

1. *Adolescent Sexual Education in the Highlands of Guatemala* – Cailey Mastrangelo, Brien K. Ashdown, and Sarah Banta
2. *Suicidal Ideation and Psychosocial Functioning in African American Girls* – Dawn Witherspoon and Maureen Black
3. *Understanding Parental Influence on Social Relations among Chinese Adolescents: A Cultural Perspective* – Peipei Hong, Ming Cui, and Qinmei Xu
4. *Guatemalan Teenagers' Hopes and Dreams for the Future: A Qualitative Study of Goals and Characteristics for Future Selves* – Angelina DiPhilippo, Brien K. Ashdown, and Gillian Owens

## **Infusing International Perspectives within APA**

**Room: Florida Salon A**

Chair: Antonio E. Puente

1. *The Role of the Memorandum of Understanding within the Office of International Programs* – Amanda Clinton
2. *The Internationalization of the APA* – Merry Bullock
3. *The Evolution of the Internationalization of the APA within Present Strategic and Advocacy Efforts* – Antonio E. Puente

## **A Panel Session: Popular Culture, Ethnic Culture, Media Representations, Identity Conflicts and Cross-cultural Implications in Korea and China**

**Room: Jacksonville**

Chair: Seon-Gi Baek

1. *Migrant Marriage Women, Multiple Cultural Couples, Media Representations, Ethnic and Racial Discriminations: A Cross-Cultural Approach on TV Reality Programs in Korea with Perspectives of Cultural Studies* – Seon-Gi Baek
2. *A Study on Genre Format, Specialties, and Patterns of the Crime Drama: Focusing on Comparative Cultural Analysis on the Representation of Corruption and Government Empowerment between Korean Dramas and Chinese Ones* – Yiming Huang, Seon-Gi Baek, and Ao Guo
3. *Korean Film, Representations of Chinese Community, and Cross-cultural Implications: A Semiotic and Discourse Analysis on "Midnight Runners," a Korean Film* – Xinyi Yi, Seon-Gi Baek, and Hu Jin
4. *Menstrual Leave Policy in South Korea: A Framework Analysis of the Barriers Experienced by South Korean Female Employees* – Eliane Nierinck and Jonathan Holslag

## **Women and Men's Well-being**

**Room: Pensacola**

Chair: Douglas Raybeck

1. *Women, Stress, and Participation in Possession Cults* – Douglas Raybeck
2. *The Context of Time-Poverty of North Korean Women* – Gahwan Yoo and Sungnam Kim
3. *What are Predictors of Posttraumatic Growth among Mothers of Child with Developmental Disability in South Korea?* – Sung Min Lee
4. *Longer Life Expectancies in 2017 than 2002 in Most of the United Nations* – Herbert Barry III

## **Conversation Hour: "In Memory of.....": Remembering Carolyn Pope Edwards and a Discussion of How Relationships Shape Us as Scholars**

**Room: St. Augustine**

Chair: Jill Brown

Participants: Jill Brown, Maria Rosario T. de Guzman, and Gustavo Carlo

# Friday Presentations:

## 1:00pm-2:00pm

### **Advances in Cultural Research Methodologies**

**Room: Florida Salon B**

Chair: Joyce Frey

1. *(Mis)Communicating with Geographic Information Systems (GIS): Insights from Mapping Ethnic Minority Distribution* – Rodrigo Cantarero, Maria Rosario T. de Guzman, Soo-Young Hong, Jeong-Kyun Choi, and Sarah Taylor
2. *Indigenous Methodology Meets the Academy* – Joyce Frey
3. *Nationalism, Patriotism, and Citizenship: Exploring Degrees of 'Belongingness' in Comic Books and Culture* – Yurimi Grigsby, Israel Espinosa, Edgar Ramos, and Samantha Chavez

### **Ethical Considerations in Trauma Research and the Sensitivity of Qualitative Methodology**

**Room: Florida Salon A**

Co-Chairs: Lora Erickson, Jeanne Edman, and Mercedes McCormick

1. *The Rwandan Way of Parenting: Ethical Considerations in Conducting Cultural Research* – Joyce Yip Green
2. *Aspirational Ethics: Using Sensitivity to Address Death and Loss Across Cultures* – Felice Mayes
3. *Descriptions of Traumatic Events Among Ethnically Diverse College Students: Ethical Issues in Assessing Cases of Interpersonal Violence* – Jeanne Edman
4. *Cross-Cultural Resiliency: Ethical Considerations with Emancipated Young Adults* – Lora Erickson
5. *Running Women's Problem-Solving Groups Among Syrian Refugees in Lebanon: A Positive Experience* – Brigitte Khoury

### **Panel Discussion in Remembrance of Robert Lee Munroe**

**Room: Jacksonville**

Chair: Paul Y. L. Ngo

1. *Cultural Change, Children's Everyday Activities, and Cognitive Development* – Mary Gauvain
2. *Robert (Lee) Munroe: Loss of a Cross-Cultural Pioneer* – Carol R. Ember
3. *The Convergence of Gender and Culture in Research Methodologies and Findings* – Deborah L. Best
4. *Reminiscences of Lee Munroe* – Douglas Raybeck

### **Youth**

**Room: St. Augustine**

Chair: Aishwarya Joshi

1. *Reframing Mental Health Perceptions: Need for Mental Health Education in Kenya* – Aishwarya Joshi, Yuichi Sasakawa, and Peter P. Njue
2. *Child Soldiers as Future Peacebuilders* – Charles Wratto
3. *Determinants of Autism Rates in Vulnerable International Populations* – Daina Crafa, Shih-Hsio Huang, and Caitlin M. Stoddart

### **Immigration, Migration, Acculturation**

**Room: Pensacola**

Chair: Ziarat Hossain

1. *Sociodemographic Characteristics and Migration Behaviors of Foreign Migrant Fathers in Malaysia* – Ziarat Hossain and Zainal Bin Madon
2. *A Bootstrapped Structural Equation Modeling Study on Second-Generation Immigrants' Perceived Cultural Similarity and Community Engagement* – Annie Hanh Vu and Manyu Li
3. *Intersections of Single Parenthood, Immigration, Gender, and Ethnicity* – Gia Lam
4. *Choice Under Uncertainty: The Settlement Decisions of Serbian Self-Initiated Expatriates in the United States* – Kristijan Civljak

# Friday Presentations:

## 2:45pm-4:15pm

### **Higher Education, Teaching**

**Room: Florida Salon B**

Chair: Jill Brown

1. *Exploring Mental Health Perceptions and Prevalence among Black Women Doctoral Candidates in STEM Fields of Computer Science and Engineering* – Aishwarya Joshi, Marjorie Shavers, Sharnnia Artis, Stacie LeSure, and Breana Spencer
2. *Effects of Cultural Cohorts on Class Participation Attitudes and Communication Apprehension in Chinese and Domestic US Graduate Business Students* – Mary Marcel and Li Wei
3. *Students in Cultural Transition: The Adjustment of International Students in the Community College* – Janice Hartgrove-Freile
4. *The Question: Decolonizing Psychological Research in a Classroom Exercise* – Jill Brown, Olivia Kennedy, and Abril Rangel-Pacheco

### **Human Trafficking: Rarely Acknowledged or Recognized**

**Room: Florida Salon A**

Chair: Nancy M. Sidun

Discussant: Jill J. Bloom

1. *The Impact of Climate Change on Modern Day Slavery* – Nancy M. Sidun
2. *Resistance and Resilience: Narratives of Sex Trafficking from the Northern Triangle* – Yvette G. Flores
3. *Invisible Victims of Slavery: Human Trafficking of Men and Boys* – Irma Barron
4. *Follow the Money: Parallels among Human Trafficking, Children Alone or Separated at the Border, and Intercountry Adoption* – Judith L. Gibbons

### **Assessing the Psychological Impact of Community-Level Interventions: How Might One Meaningfully Compare Measures Taken at Different Times and Places?**

**Room: Jacksonville**

Chair: Paul Y. L. Ngo

1. *Local Community Cohesion and Socio-Cultural Integration across Time and Space* – Tom Sørensen, Andreas P. Sørensen, and Paul Y. L. Ngo
2. *Disastrous Events: Reflections on Interventions at a Community Level* – Lars Weisæth, Tom Sørensen, and Andreas P. Sørensen
3. *Detection of Social Support in a Local Community Context* – Andreas P. Sørensen, Tom Sørensen, and Paul Y. L. Ngo
4. *Evaluating the Trickle-Down Effects of Sociocultural Interventions on Psychological Well-Being* – Paul Y. L. Ngo, Tom Sørensen, and Andreas P. Sørensen

### **Emerging Adulthood**

**Room: St. Augustine**

Chair: Amanda Faherty

1. *Emerging Adulthood in a Post-Industrial World* – Gowri Parameswaran
2. *Fa [Me]ily: Navigating Filial Responsibility, Self-Esteem, and Well-Being Across Ethnic-Racial Groups of Emerging Adult College Students* – Amanda Faherty, Ana K. Marcelo, and Tuppett M. Yates
3. *Friendship Beliefs and Practices of Chinese Emerging Adults: Familial Influences and Personal Experiences* – Lei Jin and Xuan Li
4. *Role of Cultural Orientation and Morality in Decision Making of Life Choices among Emerging Adults in India* – Deeya Mitra and Jeffrey Jensen Arnett
5. *The Difference in Turkish Emerging Adults' Positive Development Indices with Respect to the Clusters of Cultural Self-Construals (Autonomy-Relatedness)* – Alp Aytuglu, Ayfer Dost-Gözkân, and Geoffrey L. Brown

### **Identity and the Self**

**Room: Pensacola**

Chair: Hema Ganapathy-Coleman

1. *Synthesizing a Hindu Religious Identity Abroad: Acculturation, Meaning-Making and Selfhood in the Lives of Indian Hindu Immigrants in Canada* – Hema Ganapathy-Coleman
2. *"Our Culture" and "Their Culture": A Comparative Case Study of Living in between Two Cultures* – Hsin-Yu Chen and Yanhong Liu
3. *"If you could choose..." Attitudes toward Skin Color and Makeup Foundation Shade Choices in Daily Contexts: A Cross-Cultural Study* – Hsin-Yu Chen, Nina Jablonski, Garry Chick, and Careen Yarnal

# Friday Poster Session:

## 5:30pm-6:45pm

1. Rejitha Nair, *Past Peer Victimization Experiences and Ethnic Identity among South Asian Immigrant Students*
2. Sriram Balasubramanian, *Insight Based Philosophising of Antiquity and its Relevance to Projective Psychometric Thought Processes Particularly IQ Systems*
3. Holly Skillman-Dougherty, *Examining Perceptions: Attitudes, Violence, and Mental Health*
4. Sarah Ahmed & C. Dominik Guess, *US and German Differences in Cognitive Uncertainty and Dynamic Decision Making: Risk Aversion versus Action Orientation*
5. Svitlana Sharkova & David Manning, *The Different Aspects of Education in American and Ukrainian Universities: A Comparative Study in Terms of Fulbright Exchange Program*
6. Jing Wen Ong, Kirsten Klein, Sonali Tewatia, Eric Gitlen, Maya Tatro, & Steven L. Berman, *Attachment and Religion: A Cross-National Comparison of Monotheistic and Polytheistic Beliefs*
7. Fang-yu Chiou, *Social Caring or Social Control? Structural Oppression of New Immigrant Single Parents Deriving from Kinship Responsibility in Taiwan's Public Assistance Act*
8. Andre Rodriguez, Donaka Autry, Zachary Boudreaux, Joshua Dupuis, & Manyu Li, *Immigrants' Cultural Identity Conflicts and Community Support*
9. Irene O. Padasas, Maria Rosario de Guzman, & Surin Kim, *The Role of Youth in Youth Entrepreneurship in Rural Communities*
10. Brianna Jordan, Dawn Witherspoon, & Maureen Black, *How Food Insecurity Affects Child Health*
11. Ebra Elsharnouby, *A Narrative Inquiry: The Effects of Socio-Cultural Systems on Intimate Relationships and Identity Construction of American Men*
12. Bertrina West, *Quality of Life among South African Non-Familial Caregivers of Childhood Sexual Abuse Survivors*
13. Samantha Ronderos, Tatyanna Wilcher, Frances Breanaa McDonald, & Dawn Witherspoon, *Obesity and Body Size Satisfaction in African American Girls*
14. Kacey Monagas, Brianna Jordan, & Dawn Witherspoon, *Disordered Eating in Male and Female African American Adolescents*
15. Danielle Lippman, Kamala Ramadoss, & Rui Tian, *Gender Differences in Child Care and Household Tasks: An Exploratory Study from an Indo-U.S. Perspective*
16. Lisa S. Fuentes & Oswaldo Moreno, *Religiosity, Gender and Negative Attitudes towards Professional Mental Health Services*
17. Rafael Hernandez, Lisa Fuentes, Miriam Ortiz, & Oswaldo Moreno, *Religious Engagement and Adversity during the Immigration Process: A Qualitative Approach that Explores the Latinx Immigrant Experience*
18. Kristen N. Herlosky, Daniel C. Benyshek, & Alyssa N. Crittenden, *Birth Practices among the Hadza Foragers of Tanzania: What Brings Happiness and Unhappiness for Mothers during Pregnancy and in the Postpartum Period?*
19. Maria Rosario T. de Guzman, Rodrigo Cantarero, Soo-Young Hong, Jeong-Kyun Choi, Aileen Garcia, & Sarah Taylor, *Community Characteristics, Discrimination and Quality of Life among Rural Ethnic Minorities: Implications for Stemming Rural Flight*
20. Timothy Oblad & Alexa Carrier, *Understanding Self-harm among Minority Youth: The Role of Cyber-victimization, Self-control, Social Capital, and Coping*
21. Megan Fox, LeAnne Zaire, Jamie Layton, & Lynette Bikos, *How International Interest, Diversity Attitudes, and Individual Characteristic Effects Sociocultural Adaptation During Education Abroad*
22. Courtney Jones, Ning he Shao, Tina Tu, Chen Peng, Rose Wang, Sherry Cheng, Rui Yang, Niobe Way, Hirokazu Yoshikawa, Xinyin Chen, & Huihua Deng, *Friendship in a Changing Chinese Context: How do Mothers Value their Children's Friendships?*
23. De'Vohn Roman, Norrelle Walker, & Dawn Witherspoon, *How Perceived Benefits and Barriers to Physical Activity within Adolescent Girls is Related to BMI*
24. Jose Arreola, Isabel Lopez, Crystal Venegas, Alexis Villegas, & Jonathan Martinez, *Assessing the Impact of Neighborhood Disorder on Mental Health Adjustment and Help-Seeking Outcomes*
25. Charlie Lane, Karina Ramchandani, Deeya Mitra, & Jeffrey Jensen Arnett, *Exploring Gender Roles Influence on Developmental Tasks during Emerging Adulthood*
26. Dalifa Jannoo, Dante Denardis, Ashley Santiago, Felix De La Cruz, Alvaro Lozano-Ruiz, Julia Daugherty, & Inmaculada Ibanez-Casas, *Cross-cultural and Gender Differences in a Computerized Continuous Performance Task: the EMBRACED CPT*
27. Dante Denardis, Dalifa Jannoo, Felix De La Cruz, Ashley Santiago, Alvaro Lozano-Ruiz, Julia Daugherty, & Inmaculada Ibanez-Casas, *Examining the Interactions between Ethnicity, Education and Visual Memory Using the EMBRACED Complex Figure*
28. Kara Freise & Lisa Denton, *Take Back the Night: Examining Perceptions and Experiences of Feminist Community Events*
29. Lucy Turek Damato & Amber O'Neill Smith, *International Psychology, Doctoral Students' Perspectives and Experiences*



# Saturday Workshops and Conversation Hours: 10:30am-12:00pm

***Collaboration Networking Session: Connect With Other Scholars Looking for Collaborators***

***Room: Jacksonville***

Co-Chairs: Brien Ashdown and Carrie Brown

***Conversation Hour: Redefining Global Mental Health and Well-being Through International Psychology Framework***

***Room: St. Augustine***

Participants and Co-Chairs: Lucy Turek Damato and Amber O'Neill Smith

***Workshop: How to Publish Your Thesis or Dissertation in an International Journal***

***Room: Pensacola***

Presenters and Co-Chairs: Judith L. Gibbons and Deborah L. Best

# Conference Attendees

## Pre-Registered by February 4, 2019

LAST NAME	FIRST NAME	UNIVERSITY/ACADEMIC AFFILIATION	EMAIL ADDRESS
Adetutu	Ajibose	William James College	adetutu_ajibose@williamjames.edu
Aegisdottir	Stefania	Ball State University	stefaegis@bsu.edu
Ahmed	Sarah	University of North Florida	sjahmed199@gmail.com
Alloway	Tracy	University of North Florida	tracy@tracyalloway.com
Aytuglu	Alp	University of Georgia	ha88716@uga.edu
Ann	Sorita	University of Georgia	sa20031@uga.edu
Arreola	Jose	California State University, Northridge	jose.arreola.810@my.csun.edu
Ashdown	Brien	Hobart & William Smith Colleges	ashdown@hws.edu
Augustine	Danielle	University of Georgia	daniaug6@uga.edu
Aviles-Wilcher	Tatyanna	University of North Florida	tatyannawilcher@gmail.com
Baek	Seon-Gi	Sungkyunkwan University	baek0399@gmail.com
Banta	Sarah	Hobart and William Smith	sarah.banta@hws.edu
Barclay	Leland	Hobart and William Smith Colleges	leland.barclay@hws.edu
Barron	Irma	Albizu University	ibarron@albizu.edu
Barry	Herbert	University of Pittsburgh	barryh@pitt.edu
Bartholomew	Ted	Purdue University	tbartho@purdue.edu
Basilio	Raul	University of Georgia, Athens	rlpbasilio@gmail.com
Benyshek	Daniel	University of Nevada, Las Vegas	daniel.benyshek@unlv.edu
Best	Deborah	Wake Forest University	best@wfu.edu
Bettelheim	Ruth	FRESH IDEAS, INC.	freshideasinc.us@gmail.com
Blanchfield	Megan	Hobart and William Smith Colleges	megan.blanchfield@hws.edu
Bloom	Jill	William James College	Jill_bloom@williamjames.edu
Brown	Karen	Linc, International	Kbb2481@ego.thechicagoschool.edu
Brown	Jill	Creighton University	jillbrown@creighton.edu
Brown	Kelly Ann	Webster University	brownkel@webster.edu
Brown	Carrie	Western Governors University	dr.carrie.brown@gmail.com
Buchanan	Kelly	Wake Forest University	buchka17@wfu.edu
Cannon	Bradley	Psi Ch	bradley.cannon@psichi.org
Cantarero	Rodrigo	University of Nebraska-Lincoln	rcantarero1@unl.edu
Carlo	Gustavo	University of Missouri	carlog@missouri.edu
Carter	D. Bruce	Syracuse University	dbcarter@syr.edu
Chavajay	Pablo	University of New Hampshire	pablo.chavajay@unh.edu
Chen	Hsin-Yu	The Pennsylvania State University	hxc257@psu.edu
Chhun	Heang	University of Georgia	hbchhun@gmail.com
Chiang	Jason	University of Akron	jchiang@uakron.edu
Chiou	Fang-yu	TungHai University	seediq8113@gmail.com
Clem	Willow	University of North Florida	wrxclm@gmail.com
Clinton	Amanda	American Psychological Association	amanda.clinton@gmail.com
Collins	Lynn	La Salle University	lynnhcollins@gmail.com
Cramblet Alvarez	Leslie	Adams State University/Psi Chi	lcramblet@adams.edu
Crittenden	Alyssa	University of Nevada, Las Vegas	alyssa.crittenden@unlv.edu
Cuccolo	Kelly	University of North Dakota	kelly.cuccolo@und.edu
Cui	Ming	Florida State University	mcui@fsu.edu
Damato	Lucy	The Chicago School of Professional Psychology	LUCYBTUREK@GMAIL.COM
Davis	Amanda	Wake Forest University	davial15@wfu.edu
de Guzman	Maria	University of Nebraska-Lincoln	mguzman2@unl.edu
Dede Yildirim	Elif	Auburn University	ezd0032@auburn.edu
Denardis	Dante	State University of New York at Plattsburgh	ddena002@plattsburgh.edu
DeYoung	Sarah	University of Georgia	sarah.deyoung@uga.edu
Diner	Matthew	CUNY York College	mdiner@york.cuny.edu
DiPhilippo	Angelina	Hobart and William Smith Colleges	angelina.diphilippo@hws.edu
Edman	Jeanne	Cosumnes River College	edmanj@crc.losrios.edu
Elsharnouby	Ebra	Clark University	eelsharnouby@clarku.edu

# Conference Attendees

## Pre-Registered by February 4, 2019

LAST NAME	FIRST NAME	UNIVERSITY/ACADEMIC AFFILIATION	EMAIL ADDRESS
Ember	Carol	Yale University	carol.ember@yale.edu
Erickson	Lora	Johnson University	lerickson@johnsonu.edu
Faherty	Amanda	Clark University	afaherty@clarku.edu
Flores	Yvette	UC Davis	drayflores@gmail.com
Freise	Kara	SUNY Fredonia	frei8601@fredonia.edu
Frey	Joyce	The Chicago School of Professional Psychology	joyce5844@embarqmail.com
Fuentes	Lisa	Virginia Commonwealth University	fuentesls@mymail.vcu.edu
Gahwan	Yoo	Ewha Womans University	gannyoo@ewhain.net
Ganapathy-Coleman	Hema	University of Toronto Mississauga	Hema.Ganapathy.Coleman@utoronto.ca
Gangidi	Vidisha	University of Georgia	vidisha.gangidi25@uga.edu
Gauvain	Mary	University of California, Riverside	mary.gauvain@ucr.edu
Gibbons	Judith	Saint Louis University	judith.gibbons@slu.edu
Gitlen	Eric	University of Central Florida	gitlen@knights.ucf.edu
Green	Joyce	The Chicago School of Professional Psychology	jgreen2@thechicagoschool.edu
Grinnell	Diane	Aslan Institute	dianeg13@icloud.com
Guess	Christoph	University of North Florida	dguess@unf.edu
Guo	Ao	SungKyunKwan University	453477199@qq.com
Hartgrove-Freile	Janice	Lone Star College	hartgrov@lonestar.edu
Henry	Hani	American University in Cairo	hhenry@aucegypt.edu
Herlosky	Kristen	University of Nevada, Las Vegas	herlosk4@unlv.nevada.edu
Hermida	Yoannis	University of North Florida	yoannishermida@gmail.com
Hernandez	Rafael	Virginia Commonwealth University	rafaeldubon@live.com
Himawan	Karel	The University of Queensland	k.himawan@uq.net.au
Hitchcock	Robert	University of New Mexico	rkhitchcock@gmail.com
Hodorek	Sylwia	FSU	shodorek@fsu.edu
Hossain	Ziarat	University of New Mexico	zhossain@unm.edu
Huang	Yiming	Sungkyunkwan University, Seoul	huang.iming0215@gmail.com
Ibanez-Casas	Inmaculada	SUNY Plattsburgh	iiban001@plattsburgh.edu
Jannoo	Ta Ha Dalifa	SUNY Plattsburgh	tjann001@plattsburgh.edu
Jin	Lei	Syracuse University	lejin@syr.edu
Jones	Courtney	New York University	cmjones16@gmail.com
Jordan	Brianna	University of North Florida	n01392296@ospreys.unf.edu
Kalayjian	Ani	Columbia University & Meaningful World	drkalayjian@meaningfulworld.com
Kelly	Melinda	Kalahari Peoples Fund	melindackelly@gmail.com
Kennedy	Olivia	Creighton University	oke32573@creighton.edu
Khanna	Richa	University of Delaware	rkhanna@udel.edu
Khoury	Brigitte	American University of Beirut	bk03@aub.edu.lb
Lam	Gia	Athabasca University	gialam92@gmail.com
Lane	Charlie	Clark University	chlane@clarku.edu
Levitski	Olga	University of St. Petersburg	olevitski@gmail.com
Lewis	Denise	University of Georgia	denise.lewis@uga.edu
Lew-Levy	Sheina	University of Cambridge	sheinalewlevy@gmail.com
Lin	Joyce	Purdue University	lin947@purdue.edu
Liu	Chu-Li	Tunghai University	chuli@thu.edu.tw
Maciaszek	Patricia	Jagiellonian University	patricia.maciaszek@gmail.com
Mak	Chansophal	University of Georgia	makchansophal@uga.edu
Manning	David	Santa Fe College	david.manning@sfcollge.edu
Marcel	Mary	Bentley University	uvamarcel@gmail.com
Marsh	Benjamin	Azusa Pacific University	bumarsh@gmail.com
Mastrangelo	Cailey	Hobart and William Smith Colleges	cailey.mastrangelo@hws.edu
Mayes	Felice	The Chicago School of Professional Psychology	Fmayes@thechicagoschool.edu
McCormick	Mercedes	Pace University NYC	mmccormick2@pace.edu
McDonald	Frances Breanna	University of North Florida	N01158697@ospreys.unf.edu
Mercurio	Johanna	University of Georgia	jmercurio@uga.edu
Miller	Alyssa	The University of Tampa	amiller@ut.edu
Mitra	Deeya	Clark University	dmitra@clarku.edu
Monagas	Kacey	University of North Florida	n01057473@ospreys.unf.edu
Ndlovu	Nokwanda	Michigan State University	ndlovuno@msu.edu

# Conference Attendees

## Pre-Registered by February 4, 2019

LAST NAME	FIRST NAME	UNIVERSITY/ACADEMIC AFFILIATION	EMAIL ADDRESS
Ngo	Paul	St. Norbert College	paul.ngo@snc.edu
Nierinck	Eliane	Sungkyunkwan University	eliane.nierinck@yahoo.com
Nikalie	Ankita	Purdue University	anikalje@purdue.edu
Overmyer	Emily	University of South Alabama	ekovermyer@gmail.com
Padasas	Irene	University of Nebraska-Lincoln	ipadasas@huskers.unl.edu
Parameswaran	Gowri	SUNY at New Paltz	paramesg@newpaltz.edu
Peipei		Florida State University	ph17b@my.fsu.edu
Phal	Monysakada	University of Georgia	monysakada.phal@uga.edu
Pierotti	Sarah	University of Missouri	slpfk2@mail.missouri.edu
Poelker	Katelyn	Hope College	poelker@hope.edu
Pollom	Trevor	University of Nevada, Las Vegas	pollomt@unlv.nevada.edu
Pope	Sarah	University of Texas at Austin	sarahpope@utexas.edu
Puente	Antonio	UNCW	puente@uncw.edu
Rangel-Pacheco	Abril	Creighton University	ara92862@creighton.edu
Raybeck	Douglas	Hamilton College	draybeck@hamilton.edu
Rohner	Ronald	University of Connecticut	rohner@uconn.edu
Rohner	Nancy	University of Connecticut	rohner@uconn.edu
Roman	De'Vohn	University of North Florida	djpeace155@gmail.com
Ronderos	Samantha	University Of North Florida	n01418300@ospreys.unf.edu
Roos	Joy	University of Missouri	jeroos@mail.missouri.edu
Schulze	Pamela	University of Akron	schulze@uakron.edu
Sidun	Nancy	Tripler Army Medical Center	n.sidun@hawaiiantel.net
Singh	Archana	University of North Florida	archanasinghunf@gmail.com
Skillman-Dougherty	Holly	Marian University	hskillmandougherty@marian.edu
Smith	Andrea K. W.	Baker County High School	
Smith	Frederick	Florida Gateway College	frederick.smith@fgc.edu
Sorensen	Tom	University of Oslo	mrzajin@gmail.com
Sorensen	Andreas	University of Oslo	mrzajin@gmail.com
Sungnam	Kim	Ewha Womans University	lzh1024@naver.com
Stiles	Deborah	Webster University	stilesda@webster.edu
Tu	Tina	New York University	tt1239@nyu.edu
Tremblay	Aynur	Ryerson University	atremblay@ryerson.ca
Tulviste	Tiia	University of Tartu	Tiia.Tulviste@ut.ee
Ukafia	Deborah	University of Uyo	debbysylvanus16@gmail.com
Vine	Michael	University of South Florida	mdvine@gmail.com
Wei	Li	Florida Atlantic University	liwcn915@gmail.com
White	Robin	University of Tampa	rmwhite@ut.edu
Wratto	Charles	Babes-Bolyai University, Romania	charleswratto@gmail.com
Yafetto	Rodlyn	Syracuse University	rryafett@syr.edu
YI	XINYI	Sungkyunkwan Univ	spoiler_yi@naver.com
Yoder	Carol	Trinity University	cyoder@trinity.edu
Yoo	Gahwan Yoo	Ewha Womans University	gannyyoo@ewhain.net
Zabrodska	Anastassia	Tallinn University	anastassia.zabrodska@gmail.com
Zhan	Ginny	Kennesaw State University	gzhan@kennesaw.edu
Zlokovich	Martha	Psi Chi	martha.zlokovich@psichi.org



# Consider Becoming a Division 52 Member

INTERNATIONAL PSYCHOLOGY - Division 52 of the APA encourages international connections among psychologists across the globe; emphasizes research, practice and policy with an international focus; and addresses psychological aspects of global events.

To support the development of international perspectives in psychology, Division 52:

- Sponsors international programming and social events at the annual APA convention;
- Provides networking opportunities for psychologists around the world;
- Publishes the journal *International Perspectives in Psychology: Research, Practice, Consultation* and the newsletter *International Psychology Bulletin*;
- Supports the activities of APA's Office of International Affairs (OIA) and the Committee on International Relations in Psychology (CIRP); and
- Encourages information sharing and engagement through webinars, exchange opportunities, and outreach.

Anyone interested in international psychology is welcome to apply for membership. See <https://www.div52.net/index.php/membership/join-division-52> for more information. We also extend a special invitation to students: Division 52 is dedicated to providing opportunities for students to meet and interact with other students and psychologists from around the world. Student members are encouraged to attend our social and networking events at the APA conventions, contribute to the Student's Page in the *International Psychology Bulletin*, and participate in leadership activities



**Make plans now to join us for the 2019 APA Convention August 8-11, 2019 In Chicago, IL**

Here is just a glimpse of the international programming in Chicago:

- Doing No Harm: Psychologists Promoting Human Rights and Human Dignity in the 21st Century
- Promoting the Well-being of LGBT Community in Different Countries: Think Globally and Act Locally
- The Global Impact of War, Politics and Migration and Refugee Policies: the Role of Psychology
- Addressing the Needs of International Students In Light Of the Current Sociopolitical Climate.

# SCCR Membership

To join the Society for Cross-Cultural Research, please visit our website at [www.sccr.org](http://www.sccr.org) and submit the online application form. You can then pay your dues online or print and fill out a form to mail to the treasurer along with your dues payment.

Membership in SCCR begins after your payment has been received, and will continue for one or two years, depending on the selection you make. After becoming an SCCR member, you will begin receiving the current issues of *Cross-Cultural Research*. Back issues of the journal are available online only.

There are three categories of membership in SCCR. Regular, Student, and Retired members receive *Cross-Cultural Research*, the Newsletter, 20% publisher discounts from Sage Publications and from Information Age Publishing, reduced meeting registration rates, and voting privileges. Joint members share one copy of *CCR*. You may choose an alternate two-year dues payment option at a reduced rate.

Type	One Year		Two Year	
	Single	Joint	Singl	Joint
Regular	\$65	\$75	\$115	\$135
Retired	\$45	\$55	\$80	\$100
Student	\$35	\$45	\$65	\$85

Please visit <https://sccr.org/meeting/awards/> to learn more about SCCR's annual awards!