



Originally founded as the Upstate Collegiate Athletic Association in 1995, the conference was renamed the Liberty League during the summer of 2004. The league includes founding members Clarkson University, Hamilton College, Hobart and William Smith Colleges, the University of Rochester, Rensselaer Polytechnic Institute, St. Lawrence University, Skidmore College, and Union College. Vassar College became a full member of the league during the 2000-01 academic year. The U.S. Merchant Marine Academy, and Worcester Polytechnic Institute joined the Liberty League during the 2004-05 academic year as associate members in football only. Susquehanna University is the newest associate member in football, beginning play in 2007-08.

The Liberty League sponsors championships in 24 sports. The member institutions of the league place the highest priority on the overall quality of the educational experience and on the successful completion of its student-athletes' academic programs. The member institutions seek to establish and maintain an environment in which a student-athlete's athletic activities are conducted as an integral part of the educational experience.

During the 2006-07 academic year, the member institutions sent 18 teams in 14 sports to their respective NCAA Tournaments, as well as dozens of individual student-athletes to NCAA Championship events in cross country, golf, swimming and diving, tennis, and track & field.

Among the best in the nation in the classroom as well, Liberty League student-athletes garnered 15 ESPN The Magazine Academic All-America awards—including Hobart's Matt Silver '07 (tennis) and William Smith's Michelle Dodge '07 (crew)—and 45 Academic All-District honors.

Fans can visit the Liberty League online at [www.libertyleaguesports.org](http://www.libertyleaguesports.org).

## 2006 Final Liberty League Football Standings

	League					Overall				
	W	L	Pct.	PF	PA	W	L	Pct.	PF	PA
*HOBART	5	1	.833	145	109	8	2	.800	246	198
*Union	5	1	.833	175	116	7	3	.700	288	231
Rochester	4	2	.667	156	130	7	4	.636	312	273
Rensselaer	3	3	.500	170	146	7	3	.700	313	176
St. Lawrence	3	3	.500	154	140	5	4	.556	206	190
Merchant Marine	1	5	.167	134	191	3	7	.300	197	251
WPI	0	6	.000	69	171	3	6	.333	207	227

\* Co-Champions

Offensive Player of the Year: Tom Arcidiacono, Union  
 Defensive Player of the Year: Matt Boudreau, WPI  
 Special Teams Player of the Year: Adam LoGiudice, Rensselaer  
 Rookie of the Year: Grant Wright, Merchant Marine  
 Coaching Staff of the Year: Union

## Hobart's All-Liberty League Selections

DB: James Alexander	P: Dominick Ancona	DL: Ryan Aruck
K: Denis Avdic	RB: Doug Blakowski	OL: Mike DePersis
OL: Nino Giambrone	LB: Evan Hoffman	DB: Mike Kaplun
OL: Brian Ohman	DL: Andy Purdie	LB: Nolan Robinson

## 2007 Composite Schedule

<b>August 30</b>	
Moravian at Susquehanna .....	7:30 p.m.
<b>August 31</b>	
Merchant Marine at Kean .....	7 p.m.
<b>September 1</b>	
Carnegie Mellon at Rochester .....	Noon
UMass-Dartmouth at WPI .....	7 p.m.
<b>September 7</b>	
WPI at Worcester State .....	7 p.m.
<b>September 8</b>	
Susquehanna at Lebanon Valley .....	1 p.m.
Hobart at Dickinson .....	1 p.m.
Endicott at Rensselaer .....	1 p.m.
St. Lawrence at Norwich .....	2 p.m.
Merchant Marine at Coast Guard .....	2:30 p.m.
Springfield at Union .....	7 p.m.
<b>September 15</b>	
Carnegie Mellon at Hobart .....	1 p.m.
St. Lawrence at Alfred .....	1 p.m.
Utica at Rensselaer .....	1 p.m.
Union vs Muhlenberg .....	1 p.m.
Lycoming at Susquehanna .....	1:30 p.m.
William Paterson at Merchant Marine .....	2 p.m.
Becker at WPI .....	2 p.m.
Rochester at St. John Fisher .....	7 p.m.
<b>September 22</b>	
*Rensselaer at Hobart .....	1 p.m.
*Susquehanna at St. Lawrence .....	1 p.m.
*Union at Rochester .....	1 p.m.
*Merchant Marine at WPI .....	5 p.m.
<b>September 29</b>	
*Hobart at WPI .....	1 p.m.
*Rensselaer at Susquehanna .....	1:30 p.m.
*Rochester at St. Lawrence .....	2 p.m.
*Union at Merchant Marine .....	2 p.m.
<b>October 6</b>	
*Rochester at Merchant Marine .....	1 p.m.
*St. Lawrence at Rensselaer .....	1 p.m.
*WPI at Union .....	1 p.m.
*Hobart at Susquehanna .....	7 p.m.
<b>October 13</b>	
*Merchant Marine at Hobart .....	1 p.m.
Rochester at Mount Ida .....	1 p.m.
*Susquehanna at Union .....	1 p.m.
<b>October 20</b>	
*St. Lawrence at Hobart .....	1 p.m.
*Merchant Marine at Rensselaer .....	1 p.m.
*WPI at Rochester .....	1 p.m.
<b>October 27</b>	
*Susquehanna at Rochester .....	Noon
Alfred at Hobart .....	1 p.m.
*Union at St. Lawrence .....	1 p.m.
*Rensselaer at WPI .....	2 p.m.
<b>November 3</b>	
*Susquehanna at WPI .....	Noon
*Hobart at Union .....	Noon
*St. Lawrence at Merchant Marine .....	1 p.m.
*Rochester at Rensselaer .....	1 p.m.
<b>November 10</b>	
*Hobart at Rochester .....	Noon
*Rensselaer at Union .....	Noon
*WPI at St. Lawrence .....	Noon
*Merchant Marine at Susquehanna .....	1:30 p.m.



Head Coach  
Darwin Breaux



Eric Dube  
senior linebacker

### Game 1 • Hobart at Dickinson September 8 • Biddle Field • 1 p.m.

**Location:** Carlisle, Pa.  
**Founded:** 1783  
**Enrollment:** 2,030  
**President:** Dr. William G. Durden  
**Athletics Director:**  
Dr. Les Poolman  
**Nickname:** Red Devils  
**Colors:** Red and White  
**Stadium:** Biddle Field  
**Surface:** Natural Grass  
**Capacity:** 2,577

**Head Coach:** Darwin Breaux  
**Record at School:**  
87-56-1 (14 seasons)

**Career Record:**  
87-56-1 (14 seasons)

**Football Office Phone:**  
(717) 245-1644

**Assistant Coaches:** Joel Quatrone, Mick Chronister, Jason Foltin, Ben Miller, Mike Miller, Sean Murphy, Steve Reider, Scott Shank, Keven Williams, Bob Ziegler

**Basic Offense/Defense:**  
Multiple Option/4-4, 4-3, 5-5  
**2006 Record:** 8-3

**Starters Returning/Lost:** 11/11  
**Lettermen Returning/Lost:** 20/16

**Series Record:**  
Dickinson leads 8-7-1  
**First Game:** 1934, Tied 12-12  
**Last Hobart Win:** 2007, 31-28  
**Last Dickinson Win:** 2003, 17-16  
**Longest Streak:** Dickinson 5  
**Current Streak:** Hobart 3

**SID:** Charlie McGuire  
**Phone:** (717) 245-1266  
**E-Mail:** mcguire@dickinson.edu  
**Fax:** (717) 245-1441  
**Press Box Phone:** (717) 245-1266  
**Hotline:** (717) 245-1040  
**Web Site:** www.dickinson.edu

#### Recent History

1993	at Dickinson.....	L, 0-13
1994	at Hobart.....	L, 14-28
1995	at Dickinson.....	L, 14-31
1996	at Hobart.....	L, 14-40
1997	at Dickinson.....	W, 26-13
1998	at Hobart.....	L, 9-15
1999	at Dickinson.....	L, 20-32
2000	at Hobart.....	W, 28-13
2001	at Dickinson.....	W, 6-2
2002	at Hobart.....	W, 27-3
2003	at Dickinson.....	L, 16-17
2004	at Hobart.....	W, 31-10
2005	at Dickinson.....	W, 21-0
2006	at Hobart.....	W, 31-28

#### 2006 Results

Juniata..... W, 14-0  
at Hobart.....L, 28-31  
Merchant Marine..... W, 20-7  
at Johns Hopkins..... W, 21-13  
Muhlenberg..... W, 24-14  
at McDaniel..... W, 24-17  
Frank. & Marsh..... W, 28-14  
at Hampden Sydney..... W, 22-21  
Gettysburg..... W, 30-14  
at Ursinus..... L, 24-31 (ot)  
\*at Wesley.....L, 21-49  
\*NCAA Playoffs

#### 2007 Schedule

Sep. 1 at Grove City..... 1 p.m.  
8 HOBART..... 1 p.m.  
14 at Frank. & Marsh... 7 p.m.  
22 McDANIEL..... 1 p.m.  
29 at Moravian..... 1 p.m.  
Oct. 6 JOHNS HOPKINS.. 1 p.m.  
20 at Gettysburg..... 1 p.m.  
27 at Muhlenberg..... 1 p.m.  
Nov. 3 JUNIATA..... 1 p.m.  
10 URSINUS..... 1 p.m.



Head Coach  
Rich Lackner



Travis Sivek  
senior fullback

### Game 2 • Carnegie Mellon at Hobart September 15 • Boswell Field • 1 p.m.

**Location:** Pittsburgh, Pa.  
**Founded:** 1900  
**Enrollment:** 5,350  
**President:** Dr. Jared L. Cohon  
**Athletics Director:** Susan Bassett  
**Nickname:** Tartans  
**Colors:** Cardinal and Grey  
**Stadium:** Gesling Stadium  
**Surface:** Field Turf  
**Capacity:** 3,500

**Head Coach:** Rich Lackner  
**Record at School:**  
149-60-2 (21 seasons)

**Career Record:**  
149-60-2 (21 seasons)

**Football Office Phone:**  
(412) 268-2216

**Assistant Coaches:**  
Terry Bodnar  
Rich Erdelyi  
Jim Rankin  
John Bainbridge  
Pat Johnston  
Donnie Militzer  
Bo Ruffner  
Jeff Simmons  
Bernie Storer

**Basic Offense/Defense:**  
Wing T/Multiple 50  
**2006 Record:** 11-1

**Starters Returning/Lost:** 15/10  
**Lettermen Returning/Lost:** 45/18

**Series Record:** First meeting

**SID:** Mark Fisher  
**Phone:** (412) 268-3087  
**E-Mail:** mwfisher@andrew.cmu.edu  
**Fax:** (412) 268-8649  
**Press Box Phone:** (412) 268-4703  
**Hotline:** (412) 268-2211  
**Web Site:** www.cmu.edu

#### Recent History

First Meeting

#### 2006 Results

at Hiram..... W, 27-6  
at Grove City..... W, 28-0  
WESTMINSTER..... W, 33-6  
FRANK. & MARSH..... W, 34-14  
COLORADO COLL..... W, 50-26  
at Case Western..... W, 20-10  
CHICAGO..... W, 27-0  
at Washington (Mo.).. W, 10-7 (ot)  
BETHANY..... W, 44-6  
at Theil..... W, 14-7  
\*MILLSAPS..... W, 21-0  
\*at Wesley.....L, 0-37  
\*NCAA Playoffs

#### 2007 Schedule

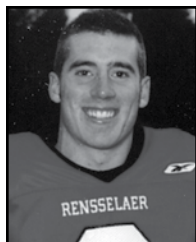
Sep. 1 at Rochester..... Noon  
8 GROVE CITY..... 1 p.m.  
15 at Hobart..... 1 p.m.  
22 ALLEGHENY..... 7 p.m.  
Oct. 6 at Randolph Macon. 1 p.m.  
13 CASE WESTERN.... Noon  
20 at Chicago..... 1 p.m.  
27 WASH. (Mo.)... 12:30 p.m.  
Nov. 3 at Bethany..... 1 p.m.  
10 WASH. & LEE..... 1 p.m.



# Opponent Information



Head Coach  
Joe King



Brendan McGowan  
senior wide receiver



Head Coach  
Ed Zaloom



Matt Boudreau  
junior linebacker

## Game 3 • Rensselaer at Hobart September 22 • Boswell Field • 1 p.m.

**Location:** Troy, N.Y.  
**Founded:** 1824  
**Enrollment:** 5,142  
**President:** Dr. Shirley Ann Jackson  
**Interim Athletics Director:**  
Kevin Beattie  
**Nickname:** Engineers  
**Colors:** Cherry and White  
**Stadium:** '86 Field  
**Surface:** Natural Grass  
**Capacity:** 3,000

**Head Coach:** Joe King  
**Record at School:**  
125-47-2 (18 seasons)  
**Career Record:**  
125-47-2 (18 seasons)

**Football Office Phone:**  
(518) 276-2556  
**Assistant Coaches:** John Barber,  
Dan Cole, Pete Costanza, Pat  
DelMonaco, Will Headen,  
Kevin King, Steve Kremer, John  
Maletta, Chad Martinovich,  
Chris Sapp, Bob Schoonmaker,  
Al Washington

**Basic Offense/Defense:**  
Multiple Spread/Multiple 4-3  
**2006 Record:** 7-3 (3-3 Liberty)

**Starters Returning/Lost:** 13/11  
**Lettermen Returning/Lost:** 41/16

**Series Record:**  
Rensselaer leads 25-24-1  
**First Game:** 1910, Hobart, 6-5  
**Last Hobart Win:** 2006, 24-17  
**Last Rensselaer Win:** 2001, 35-29  
**Longest Streak:** Rensselaer 5  
**Current Streak:** Hobart 5

**SID:** Kevin Beattie  
**Phone:** (518) 276-2187  
**E-Mail:** beattk@rpi.edu  
**Fax:** (518) 276-2188  
**Press Box Phone:** (518) 276-2345  
**Web Site:** rpiathletics.com

### Recent History

1991	at RPI	L, 15-16
1992	at Hobart	L, 0-28
1993	at RPI	L, 15-20
1994	at Hobart	L, 20-41
1995	at RPI	L, 28-40
1996	at Hobart	W, 36-35 (ot)
1997	at RPI	L, 14-16
1998	at Hobart	L, 27-31
1999	at RPI	L, 6-17
2000	at Hobart	W, 27-0
2001	at RPI	L, 29-35
2002	at Hobart	W, 34-27
2003	at RPI	W, 43-25
2004	at RPI	W, 54-13
2005	at Hobart	W, 56-48 (3ot)
2006	at RPI	W, 24-17

### 2006 Results

at Endicott ..... W, 27-7  
at Utica ..... W, 34-10  
HOBART ..... L, 17-24  
BECKER ..... W, 56-6  
at St. Lawrence ..... L, 38-42  
at Merchant Marine ..... W, 42-31  
WPI ..... W, 26-0  
at Rochester ..... L, 23-30  
UNION ..... W, 24-19  
\*at Cortland ..... W, 26-7  
\*ECAC Northeast Bowl

### 2007 Schedule

Sep. 8 ENDICOTT ..... 1 p.m.  
15 UTICA ..... 1 p.m.  
22 at Hobart ..... 1 p.m.  
29 at Susquehanna... 1:30 p.m.  
Oct. 6 ST. LAWRENCE ..... 1 p.m.  
20 USMMA ..... 1 p.m.  
27 at WPI ..... 2 p.m.  
Nov. 3 ROCHESTER ..... 1 p.m.  
10 at Union ..... Noon

## Game 4 • Hobart at WPI September 29 • Alumni Field • 1 p.m.

**Location:** Worcester, Mass.  
**Founded:** 1865  
**Enrollment:** 2,820  
**President:** Dr. Dennis D. Berkey  
**Athletics Director:**  
Dana L. Harmon  
**Nickname:** Engineers  
**Colors:** Crimson and Gray  
**Stadium:** Alumni Field  
**Surface:** Field Turf  
**Capacity:** 2,000

**Head Coach:** Ed Zaloom  
**Record at School:**  
33-44 (8 seasons)  
**Career Record:**  
45-60 (11 seasons)

**Football Office Phone:**  
(508) 831-5624  
**Assistant Coaches:**

Pat Hickey  
Greg Crum  
Jon Chelf  
Patrick Hatch  
Chris Zona  
Anthony Figueiredo  
Steve Kasprzak  
Brian Boyle  
Mike Ragusa

**Basic Offense/Defense:**  
Multiple/4-4  
**2006 Record:** 3-6 (0-6 Liberty)

**Starters Returning/Lost:** 15/7  
**Lettermen Returning/Lost:** 54/22  
**Series Record:** Hobart leads 3-0  
**First Game:** 2004, Hobart 55-38  
**Last Hobart Win:** 2006, 19-14  
**Longest Streak:** Hobart 3  
**Current Streak:** Hobart 3

**SID:** Rusty Eggen  
**Phone:** (508) 831-5328  
**E-Mail:** rusty@wpi.edu  
**Fax:** (508) 831-5775  
**Press Box Phone:** (508) 831-5743  
**Web Site:** www.wpi.edu

### Recent History

2004	at Hobart	W, 55-38
2005	at WPI	W, 24-7
2006	at Hobart	W, 19-14

### 2006 Results

WORCESTER ST. .... W, 40-20  
BECKER ..... W, 52-16  
at Merchant Marine ..... L, 14-33  
at Hobart ..... L, 14-19  
UNION ..... L, 27-28  
ROCHESTER ..... L, 7-34  
at Rensselaer ..... L, 0-26  
at Mount Ida ..... W, 46-20  
ST. LAWRENCE ..... L, 7-31

### 2007 Schedule

Sep. 1 UMASS-DART ..... 7 p.m.  
7 at Worcester St. .... 7 p.m.  
15 BECKER ..... 2 p.m.  
22 USMMA ..... 5 p.m.  
29 HOBART ..... 1 p.m.  
Oct. 6 at Union ..... 1 p.m.  
20 at Rochester ..... 1 p.m.  
27 RENSSELAER ..... 2 p.m.  
Nov. 3 SUSQUEHANNA.. 2 p.m.  
10 at St. Lawrence ..... Noon



Head Coach  
Steve Briggs



Eddie Jones  
senior defensive back

### Game 5 • Hobart at Susquehanna

October 6 • Lopardo Stadium • 7 p.m.

**Location:** Selinsgrove, Pa.  
**Founded:** 1858  
**Enrollment:** 1,900  
**President:** Dr. L. Jay Lemons  
**Athletics Director:**  
 Pam Samuelson  
**Nickname:** Crusaders  
**Colors:** Orange and Maroon  
**Stadium:**  
 Nicholas A. Lopardo Stadium  
**Surface:** Pro-Grass  
**Capacity:** 4,500

**Head Coach:** Steve Briggs

**Record at School:**  
 96-76 (17 seasons)

**Career Record:**  
 96-76 (17 seasons)

**Football Office Phone:**  
 (570) 372-4123

**Assistant Coaches:**

- Gary Brown
- Joey Stockton
- Joe Wassink
- Andy Kolak
- Bob Pittello
- Brad Fordyce
- Bob Jazwinski
- Dan Alderson
- Dan Mehleisen
- John Salvatore

**Basic Offense/Defense:**  
 Multiple/Multiple

**2006 Record:** 2-8  
**Starters Returning/Lost:** 15/8  
**Lettermen Returning/Lost:** 18/20  
**Series Record:**  
 Susquehanna leads 2-0  
**First Game:**  
 1961, Susquehanna 35-6  
**Last Susquehanna Win:**  
 1966, 27-14  
**Longest Streak:** Susquehanna 2  
**Current Streak:** Susquehanna 2

**Interim SID:** Jennifer Botchie  
**Phone:** (570) 372-4432  
**E-Mail:** sportsinfo@susqu.edu  
**Fax:** (570) 372-2758  
**Press Box Phone:** (570) 372-4305  
**Hotline:** (570) 372-4432  
**Web Site:** www.susquehanna.edu

#### Recent History

1961 at Susquehanna ..... L, 6-35  
 1966 at Hobart..... L, 14-27

#### 2006 Results

at Ursinus .....L, 0-6  
 MORAVIAN .....L, 17-24  
 at Albright ..... W, 24-21  
 KING'S .....L, 3-14  
 at Juniata.....L, 9-34  
 WIDENER .....L, 14-31  
 at Delaware Valley ..... W, 17-10  
 FDU-FLORHAM .....L, 16-21  
 at Wilkes .....L, 7-35  
 LYCOMING .....L, 14-28

#### 2007 Schedule

Aug.30 MORAVIAN..... 7:30 p.m.  
 Sept.8 at Lebanon Valley.... 1 p.m.  
 15 LYCOMING..... 1:30 p.m.  
 22 at St. Lawrence ..... 1 p.m.  
 29 RENSSELAER ... 1:30 p.m.  
 Oct. 6 HOBART ..... 7 p.m.  
 13 at Union ..... 1 p.m.  
 27 at Rochester ..... Noon  
 Nov. 3 at WPI..... Noon  
 10 USMMA..... 1:30 p.m.



Head Coach  
Mike Toop



Geoff Troy  
junior kicker

### Game 6 • Merchant Marine at Hobart

October 13 • Boswell Field • 1 p.m.

**Location:** Kings Point, N.Y.  
**Founded:** 1943  
**Enrollment:** 1,000  
**Superintendent:**  
 Vice Adm. Joseph D. Stewart  
**Athletics Director:**  
 Susan Petersen Lubow  
**Nickname:** Mariners  
**Colors:** Royal Blue and Gray  
**Stadium:** Captain Tomb Field  
**Surface:** Field Turf  
**Capacity:** 1,000

**Head Coach:** Mike Toop

**Record at School:** 6-14 (2 seasons)

**Career Record:** 23-36 (6 seasons)

**Football Office Phone:**

(860) 444-8584

**Assistant Coaches:**

- Tim Kepple
- Patrick Foley
- Kyle Metzler
- Michael Horan
- Joe Martucci
- Antonio Anderson
- Clayton Hall
- Marc Conlon

**Basic Offense/Defense:**

Pro/3-4

**2006 Record:** 3-7 (1-5 Liberty)

**Starters Returning/Lost:** 13/10

**Lettermen Returning/Lost:** 48/18

**Series Record:**  
 Merchant Marine leads 4-3  
**First Game:**  
 1962, Merchant Marine 7-0  
**Last Hobart Win:** 2006, 30-19  
**Last Merchant Marine Win:**  
 1970, 27-14  
**Longest Streak:**  
 Merchant Marine 4  
**Current Streak:** Hobart 3

**SID:** Matthew Chmura  
**Phone:** (516) 773-5455  
**E-Mail:** chmura@usmma.edu  
**Fax:** (516) 773-5469  
**Press Box Phone:** (516) 773-5757  
**Hotline:** (516) 773-5500  
**Web Site:** usmmasports.com

#### Recent History

1962 at USMMA ..... L, 0-7  
 1963 at Hobart..... L, 13-26  
 1969 at Hobart..... L, 6-35  
 1970 at USMMA ..... L, 14-27  
 2004 at USMMA ..... W, 35-6  
 2005 at Hobart..... W, 27-9  
 2006 at USMMA ..... W, 30-19

#### 2006 Results

KEAN ..... W, 29-19  
 COAST GUARD..... W, 21-7  
 at Dickinson.....L, 7-20  
 WPI..... W, 33-14  
 at Union.....L, 20-28  
 at Rochester .....L, 28-42  
 HOBART .....L, 19-30  
 RENSSELAER.....L, 31-42  
 at St. Lawrence .....L, 7-49  
 GROVE CITY .....L, 6-14

#### 2007 Schedule

Aug.31 at Kean..... 7 p.m.  
 Sept.8 at Coast Guard.... 2:30 p.m.  
 15 WIL. PATERSON... 2 p.m.  
 22 at WPI..... 5 p.m.  
 29 UNION ..... 2 p.m.  
 Oct. 6 ROCHESTER ..... 1 p.m.  
 13 at Hobart..... 1 p.m.  
 20 at Rensselaer ..... 1 p.m.  
 Nov. 3 ST. LAWRENCE.... 1 p.m.  
 10 at Susquehanna... 1:30 p.m.



# Opponent Information



Head Coach  
Chris Phelps



Mike O'Donnell  
wide receiver

## Game 7 • St. Lawrence at Hobart October 20 • Boswell Field • 1 p.m.

**Location:** Canton, N.Y.  
**Founded:** 1856  
**Enrollment:** 2,160  
**President:** Daniel F. Sullivan  
**Athletics Director:** Margie Strait  
**Nickname:** Saints  
**Colors:** Scarlet and Brown  
**Stadium:** Leckonby Stadium  
**Surface:** Natural Grass  
**Capacity:** 1,500

**Head Coach:** Chris Phelps

**Record at School:**

13-45 (6 seasons)

**Career Record:** 17-51 (7 seasons)

**Football Office Phone:**

(315) 229-5785

**Assistant Coaches:** Brian Barbado, Mike Chaffee, Kevin Farr, Steve Fountain, Aland Joseph, Paul Phelps, James Simboli, Austin Weakfall

**Basic Offense/Defense:**

Multiple/Multiple

**2006 Record:** 5-4 (3-3 Liberty)

**Starters Returning/Lost:** 14/8

**Lettermen Returning/Lost:** 52/18

**Series Record:**

Hobart leads 41-36-2

**First Game:** 1901, Hobart 10-0

**Last Hobart Win:** 2006, 27-7

**Last St. Lawrence Win:**

1991, 41-0

**Longest Streak:** Hobart 15

**Current Streak:** Hobart 15

**SID:** Wally Johnson

**SI Football Contact:** Joe Keniston

**Phone:** (315) 229-5986

**E-Mail:** jkenisto@stlawu.edu

**Fax:** (315) 229-5589

**Press Box Phone:** (315) 229-7378

**Web Site:** www.stlawu.edu

### Recent History

1984	at Hobart.....	W, 21-13
1985	at St. Lawrence ...	L, 12-16
1986	at Hobart.....	W, 20-3
1987	at St. Lawrence .....	L, 9-10
1988	at Hobart.....	L, 13-30
1989	at St. Lawrence .....	L, 23-31
1990	at Hobart.....	L, 21-45
1991	at St. Lawrence .....	L, 0-41
1992	at Hobart.....	W, 13-0
1993	at St. Lawrence .....	W, 32-7
1994	at Hobart.....	W, 27-23
1995	at St. Lawrence ...	W, 20-16
1996	at Hobart.....	W, 26-25
1997	at St. Lawrence .....	W, 57-0
1998	at Hobart.....	W, 41-14
1999	at St. Lawrence ...	W, 28-10
2000	at Hobart.....	W, 41-7
2001	at St. Lawrence .....	W, 47-0
2002	at Hobart.....	W, 44-14
2003	at St. Lawrence ...	W, 28-10
2004	at St. Lawrence ...	W, 21-10
2005	at Hobart.....	W, 13-9
2006	at St. Lawrence .....	W, 27-7

### 2006 Results

NORWICH..... W, 17-13  
ALFRED .....L, 14-17  
JOHNS HOPKINS..... W, 21-20  
at Rochester .....L, 18-19  
RENSSELAER..... W, 42-38  
HOBART.....L, 7-27  
at Union.....L, 7-42  
MERCHANT MARINE... W, 49-7  
at WPI..... W, 31-7

### 2007 Schedule

Sep. 8 at Norwich..... 2 p.m.  
15 at Alfred..... 1 p.m.  
22 SUSQUEHANNA.. 1 p.m.  
29 ROCHESTER ..... 2 p.m.  
Oct. 6 at Rensselaer..... 1 p.m.  
20 at Hobart..... 1 p.m.  
27 UNION ..... 1 p.m.  
Nov. 3 at Merchant Marine 1 p.m.  
10 WPI..... Noon



Head Coach  
Dave Murray



Don Miller  
senior defensive tackle

## Game 8 • Alfred at Hobart October 27 • Boswell Field • 1 p.m.

**Location:** Alfred, N.Y.

**Founded:** 1836

**Enrollment:** 2,000

**President:**

Dr. Charles M. Edmondson

**Athletics Director:** Jim Moretti

**Nickname:** Saxons

**Colors:** Purple and Gold

**Stadium:** Merrill Field

**Surface:** AstroTurf

**Capacity:** 5,000

**Head Coach:** Dave Murray

**Record at School:**

53-38 (9 seasons)

**Career Record:**

97-78-1 (18 seasons)

**Football Office Phone:**

(607) 871-2889

**Assistant Coaches:** Richard Puc-

cio, Bob Rankl, Nick Cole-

man, Chris Reger, Scott Linn,

Dave Szentesy, Chris Fee, Bob

Margeson

**Basic Offense/Defense:**

Multiple I/4-3

**2006 Record:** 8-3

**Starters Returning/Lost:** 17/7

**Lettermen Returning/Lost:** 34/9

**Series Record:**

Hobart leads 38-35-4

**First Game:** 1899, Hobart 30-11

**Last Hobart Win:** 2006, 21-14

**Last Alfred Win:** 1995, 35-14

**Longest Streak:** Hobart 9

**Current Streak:** Hobart 9

**SID:** Mark Whitehouse

**Phone:** (607) 871-2904

**E-Mail:** whitehouse@alfred.edu

**Fax:** (607) 871-2874

**Press Box Phone:** (607) 871-2236

**Hotline:** (607) 871-2874

**Web Site:** www.alfred.edu

### Recent History

1988	at Alfred .....	L, 7-48
1989	at Hobart.....	L, 14-28
1990	at Alfred.....	L, 10-37
1991	at Hobart.....	L, 10-30
1992	at Alfred .....	W, 28-17
1993	at Alfred .....	W, 19-14
1994	at Hobart.....	L, 21-35
1995	at Alfred .....	L, 14-35
1996	at Hobart.....	W, 31-26
1997	at Alfred .....	W, 58-19
1998	at Hobart.....	W, 40-3
1999	at Alfred .....	W, 29-20
2000	at Hobart.....	W, 20-14
2001	at Alfred .....	W, 24-21
2002	at Hobart.....	W, 25-19 (ot)
2003	at Alfred .....	W, 20-12
2006	at Alfred .....	W, 21-14

### 2006 Results

THIEL.....W, 14-0  
at St. Lawrence .....W, 17-14  
at Springfield.....L, 34-41  
NORWICH.....W, 48-13  
at Hartwick .....W, 41-21  
at Utica .....W, 24-3  
at Husson .....W, 24-7  
HOBART.....L, 14-21  
ITHACA .....W, 28-17  
ST. JOHN FISHER.....L, 13-41  
\*ROCHESTER..... W, 40-34 (ot)  
\*ECAC Northwest Bowl

### 2007 Schedule

Sep. 8 at Thiel ..... 1 p.m.  
15 ST. LAWRENCE..... 1 p.m.  
22 SPRINGFIELD..... Noon  
29 at Norwich..... 1:30 p.m.  
Oct. 6 HARTWICK..... 1 p.m.  
13 UTICA ..... 1 p.m.  
20 HUSSON ..... 1 p.m.  
27 at Hobart..... 1 p.m.  
Nov. 3 at Ithaca..... 1 p.m.  
10 at St. John Fisher..... 1 p.m.



Head Coach  
John Audino



Dustin Connelly  
senior offensive tackle

### Game 9 • Hobart at Union November 3 • Bailey Field • Noon

**Location:** Schenectady, N.Y.  
**Founded:** 1795  
**Enrollment:** 2,100  
**President:** Stephen C. Ainlay  
**Athletics Director:**  
Jim McLaughlin  
**Nickname:** Dutchmen  
**Color:** Garnet  
**Stadium:** Frank Bailey Field  
**Surface:** Field Turf  
**Capacity:** 2,200

**Head Coach:** John Audino  
**Record at School:**  
115-37 (15 seasons)  
**Career Record:**  
123-49 (17 seasons)  
**Football Office Phone:**  
(518) 388-6152

**Assistant Coaches:** Gary Reynolds,  
Pete Brown, Erv Chambliss,  
Larry Cottrell, Daryl Stever-  
son, T.R. Perna, Jon Kralovic,  
Jon Knapp, Alan Fiore, Chris  
Nappi, Blaise Iuliano, Gary  
Holtz

**Basic Offense/Defense:**  
Multiple/Multiple  
**2006 Record:** 7-3 (5-1 Liberty)  
**Starters Returning/Lost:** 15/14  
**Lettermen Returning/Lost:** 27/15

**Series Record:**  
Union leads 48-40-2  
**First Game:**  
1896, Hobart 6-4  
**Last Hobart Win:** 2004, 33-27 (ot)  
**Last Union Win:** 2006, 31-14  
**Longest Streak:** Union 16  
**Current Streak:** Union 2  
**SID:** Eric McDowell  
**Phone:** (518) 388-6170  
**E-Mail:** mcdowe@union.edu  
**Fax:** (518) 388-6096  
**Press Box Phone:** (518) 388-6382  
**Hotline:** (518) 388-6146  
**Web Site:** unionathletics.com

#### Recent History

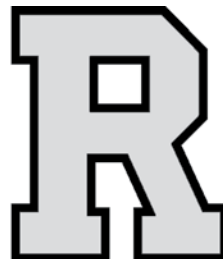
1993	at Hobart.....	L, 3-26
1994	at Union.....	L, 14-42
1995	at Hobart.....	L, 15-39
1996	at Union.....	L, 22-24
1997	at Hobart.....	L, 17-28
1998	at Union.....	W, 19-14
1999	at Hobart.....	L, 14-20
2000	at Union.....	W, 13-12
2001	at Hobart.....	L, 6-42
2002	at Union.....	W, 14-6
2003	at Hobart.....	W, 35-3
2004	at Hobart.....	W, 33-27 (ot)
2005	at Union.....	L, 18-28
2006	at Hobart.....	L, 14-31

#### 2006 Results

at Springfield.....L, 30-38  
MUHLENBERG..... W, 35-7  
ROCHESTER..... W, 27-24  
MERCHANT MARINE . W, 28-20  
at WPI..... W, 28-27  
FRANK. & MARSH..... W, 28-21  
ST. LAWRENCE ..... W, 42-7  
at Hobart..... W, 31-14  
at Rensselaer .....L, 19-24  
\*at St. John Fisher .....L, 21-49  
\*NCAA Playoffs

#### 2007 Schedule

Sept. 8 SPRINGFIELD..... 7 p.m.  
15 at Muhlenberg ..... 1 p.m.  
22 at Rochester..... Noon  
29 at Merchant Marine 2 p.m.  
Oct. 6 WPI..... 1 p.m.  
13 SUSQUEHANNA.. 1 p.m.  
27 at St. Lawrence ..... 1 p.m.  
Nov. 3 HOBART ..... Noon  
10 RENNELAER ..... Noon



Head Coach  
Scott Greene



Matt Bielecki  
senior running back

### Game 10 • Hobart at Rochester November 10 • Fauver Stadium • Noon

**Location:** Rochester, N.Y.  
**Founded:** 1850  
**Enrollment:** 4,355  
**President:** Joel Seligman  
**Athletics Director:**  
George VanderZwaag  
**Nickname:** Yellowjackets  
**Colors:** Blue and Yellow  
**Stadium:** Edwin Fauver Stadium  
**Surface:** Field Turf  
**Capacity:** 5,000

**Head Coach:** Scott Greene  
**Record at School:** 7-4 (1 season)  
**Career Record:** 7-4 (1 season)  
**Football Office Phone:**  
(585) 275-9458

**Assistant Coaches:** Mike Foster,  
Nick Grange, Jeff Ambrosio,  
Dave Howlett, Noah Fehren-  
bach, Kassim Howell, Cory  
Vartanian, Paul Fiorentino,  
John Micca

**Basic Offense/Defense:**  
Multiple/Multiple  
**2006 Record:** 7-4 (4-2 Liberty)

**Starters Returning/Lost:** 15/9  
**Lettermen Returning/Lost:** 46/19

**Series Record:**  
Rochester leads 47-45-7  
**First Game:** 1892, Rochester 40-0

**Last Hobart Win:** 2006, 31-21  
**Last Rochester Win:** 2003, 17-13  
**Longest Streak:** Rochester 11  
**Current Streak:** Hobart 3  
**SID:** Dennis O'Donnell  
**Phone:** (585) 275-5955  
**E-Mail:**  
dennis.odonnell@rochester.edu  
**Fax:** (585) 275-4353  
**Press Box Phone:** (585) 275-4353  
**Web Site:** www.rochester.edu

#### Recent History

1987	at Rochester.....	L, 0-17
1988	at Hobart.....	L, 0-29
1989	at Rochester.....	L, 14-42
1992	at Hobart.....	L, 0-31
1993	at Rochester.....	W, 2-0
1994	at Rochester.....	W, 21-0
1995	at Hobart.....	L, 17-26
1996	at Rochester.....	W, 35-13
1997	at Hobart.....	W, 48-14
1998	at Rochester.....	L, 14-6
1999	at Hobart.....	W, 48-21
2000	at Rochester.....	L, 0-14
2001	at Hobart.....	W, 38-12
2002	at Rochester.....	W, 59-21
2003	at Hobart.....	L, 13-17
2004	at Hobart.....	W, 41-20
2005	at Rochester.....	W, 42-25
2006	at Hobart.....	W, 31-21

#### 2006 Results

at Johns Hopkins..... W, 20-10  
ST. JOHN FISHER.....L, 10-30  
GETTYSBURG..... W, 54-42  
at Union.....L, 24-27  
ST. LAWRENCE ..... W, 19-18  
MERCHANT MARINE . W, 28-24  
at WPI..... W, 34-7  
at Grove City ..... W, 38-21  
RENSELAEER..... W, 30-23  
at Hobart.....L, 21-31  
\*at Alfred.....L, 34-40  
\*ECAC Northwest Bowl

#### 2007 Schedule

Sept. 1 CMU..... Noon  
15 at St. John Fisher ..... 7 p.m.  
22 UNION ..... Noon  
29 at St. Lawrence ..... 2 p.m.  
Oct. 6 at Merchant Marine 1 p.m.  
13 at Mount Ida..... 1 p.m.  
20 WPI..... 1 p.m.  
27 SUSQUEHANNA... Noon  
Nov. 3 at Rensselaer ..... 1 p.m.  
10 HOBART ..... Noon



# All-Time Series Results



Team	1st Mtg	Last Mtg	W	L	T	Pct.	APF	APA
Albany	1979	1979	0	1	0	.000	0.0	15.0
Albany Teacher's	1917	1917	0	1	0	.000	6.0	7.0
<b>ALFRED</b>	<b>1899</b>	<b>2006</b>	<b>38</b>	<b>35</b>	<b>4</b>	<b>.519</b>	<b>16.2</b>	<b>15.1</b>
Allegheny	1952	1957	6	0	0	1.000	28.8	7.7
Alumni	1902	1902	0	1	0	.000	0.0	5.0
Amherst	1933	1940	0	2	1	.167	4.7	23.3
Army	1936	1936	0	1	0	.000	7.0	51.0
Assumption	1991	1991	1	0	0	1.000	36.0	15.0
Auburn AA	1897	1899	2	0	0	1.000	10.5	7.0
Auburn Seminary	1893	1893	1	0	0	1.000	8.0	0.0
Bridgewater State	2000	2000	1	0	0	1.000	25.0	0.0
Brockport State	1949	1982	3	5	0	.375	18.3	19.5
Brooklyn	1952	1953	2	0	0	1.000	34.0	6.0
Buffalo	1894	1981	21	17	4	.548	14.7	14.8
Buffalo State	1984	1993	3	3	0	.500	14.7	20.8
Canandaigua	1891	1895	4	0	1	.900	22.0	0.0
Canisius	1918	1992	4	6	0	.400	13.0	19.1
Carthage	1902	1902	0	1	0	.000	0.0	12.0
Cascadilla	1895	1895	0	0	1	.500	0.0	0.0
Cayuga	1895	1895	0	0	1	.500	0.0	0.0
CCNY	1922	1942	3	2	0	.600	10.0	6.6
Clarkson	1915	1929	9	2	0	.818	18.7	8.5
Clyde	1905	1905	1	0	0	1.000	18.0	0.0
Clyde AC	1896	1896	1	0	0	1.000	6.0	0.0
Coast Guard	1975	2005	3	1	0	.750	28.8	12.5
Colby	1971	1974	3	1	0	.750	32.3	13.0
Colgate	1895	1928	1	15	1	.088	2.9	25.6
Columbia	1917	1950	0	2	0	.000	6.0	56.0
Columbia AC	1898	1898	1	0	0	1.000	35.0	0.0
Cook Academy	1903	1905	2	0	1	.833	19.7	1.7
Cornell	1902	1930	0	5	0	.000	0.0	34.8
Cornell Frosh	1891	1891	1	0	0	1.000	24.0	10.0
Cortland	1903	2005	7	6	0	.538	15.2	14.5
Curry	2004	2004	1	0	0	1.000	35.0	16.0
Dartmouth	1925	1929	0	5	0	.000	0.0	48.4
Delaware Valley	2005	2005	0	1	0	.000	14.0	21.0
Denison	1936	1975	3	0	0	1.000	15.3	2.3
<b>DICKINSON</b>	<b>1934</b>	<b>2006</b>	<b>7</b>	<b>8</b>	<b>1</b>	<b>.469</b>	<b>17.4</b>	<b>16.9</b>
Drexel	1971	1971	1	0	0	1.000	35.0	8.0
Dryden AC	1896	1896	1	0	0	1.000	10.0	4.0
Elmira	1894	1896	1	2	1	.375	4.0	6.8
Elmira AA	1897	1897	1	0	0	1.000	22.0	0.0
Elmira AC	1896	1896	0	0	1	.500	0.0	0.0
Franklin & Marshall	1996	2005	8	2	0	.800	26.1	14.2
Gannon	1989	1990	1	1	0	.500	11.5	10.0
Genesee Wesleyan	1899	1901	1	1	1	.500	21.7	9.7
Geneva	1900	1900	0	1	0	.000	0.0	6.0
Geneva AA	1897	1897	2	0	0	1.000	29.0	2.0
Geneva AC	1896	1896	2	0	0	1.000	46.0	0.0
Geneva High	1895	1899	1	0	1	.750	7.5	4.5
Grove City	1967	1968	0	2	0	.000	16.5	30.0
Hamilton	1895	1993	29	27	8	.516	13.3	12.5
Hartwick	1933	1997	4	2	0	.667	26.3	20.5
Haverford	1950	1951	2	0	0	1.000	34.5	9.5
Herkimer AA	1897	1897	1	0	0	1.000	11.0	10.0
Herkimer AC	1896	1896	1	0	0	1.000	12.0	0.0
Hofstra	1983	1988	1	5	0	.167	13.2	21.0
Holbrook	1935	1935	1	0	0	1.000	52.0	0.0
Iona	1983	1984	2	0	0	1.000	35.5	6.5

Team	1st Mtg	Last Mtg	W	L	T	Pct.	APF	APA
Ithaca	1961	2003	3	24	0	.111	13.7	29.7
John Carroll	1960	2002	1	2	0	.333	4.7	13.0
Johns Hopkins	1965	1966	2	0	0	1.000	34.0	10.0
Kent State	1939	1939	0	1	0	.000	6.0	8.0
Kenyon	1928	1971	14	4	1	.763	27.5	8.5
Lafayette	1909	1924	0	2	0	.000	0.0	40.0
Laureate Boat C.	1897	1898	1	1	0	.500	5.5	18.5
Lima	1902	1902	1	0	0	1.000	29.0	0.0
LIU-C.W. Post	1959	1960	1	1	0	.500	6.5	6.5
Long Island	1931	1931	0	1	0	.000	6.0	14.0
<b>MERCHANT MARINE</b>	<b>1962</b>	<b>2006</b>	<b>3</b>	<b>4</b>	<b>0</b>	<b>.429</b>	<b>17.9</b>	<b>18.4</b>
Middlebury	1947	1948	0	2	0	.000	9.5	22.0
Mount Union	1972	1973	2	0	0	1.000	24.5	8.5
Muskingum	1967	1968	0	2	0	.000	3.0	13.5
Niagara	1907	1946	5	4	0	.556	9.2	9.3
Norwich	1938	2003	1	2	0	.333	15.7	21.0
NYU	1921	1932	1	4	0	.200	4.0	31.8
Pace	1990	1993	2	2	0	.500	19.5	16.8
Palmer Institute	1904	1906	2	0	0	1.000	28.5	2.5
Plymouth State	1987	1987	1	0	0	1.000	10.0	0.0
<b>RENSELAER</b>	<b>1910</b>	<b>2006</b>	<b>24</b>	<b>25</b>	<b>1</b>	<b>.490</b>	<b>22.0</b>	<b>17.6</b>
<b>ROCHESTER</b>	<b>1892</b>	<b>2006</b>	<b>45</b>	<b>47</b>	<b>7</b>	<b>.490</b>	<b>13.5</b>	<b>14.0</b>
Rochester Inst. Tech.	1972	1977	5	0	1	.917	39.8	14.5
Rochester Sch. Opt.	1923	1923	1	0	0	1.000	39.0	0.0
Rochester YMCA	1896	1896	1	0	0	1.000	12.0	6.0
Rowan	2004	2006	0	2	0	.000	16.0	32.5
Rutgers	1912	1913	0	2	0	.000	3.5	43.5
Sampson	1947	1948	2	0	0	1.000	18.0	0.0
Seneca Falls	1893	1894	2	0	0	1.000	51.0	0.0
Seneca Falls AA	1897	1897	1	0	0	1.000	24.0	0.0
St. Bonaventure	1916	1920	0	1	1	.250	3.5	7.5
St. John Fisher	1990	2003	10	4	0	.714	20.7	13.1
St. John's	1892	1899	3	2	1	.583	8.3	8.0
<b>ST. LAWRENCE</b>	<b>1901</b>	<b>2006</b>	<b>41</b>	<b>36</b>	<b>2</b>	<b>.532</b>	<b>16.5</b>	<b>17.2</b>
St. Michael's	1916	1916	1	0	0	1.000	34.0	0.0
St. Stephen's	1914	1923	1	1	0	.500	17.0	0.0
Starkey Academy	1905	1907	2	0	0	1.000	5.5	0.0
Starkey Seminary	1894	1894	1	0	0	1.000	34.0	4.0
<b>SUSQUEHANNA</b>	<b>1961</b>	<b>1966</b>	<b>0</b>	<b>2</b>	<b>0</b>	<b>.000</b>	<b>10.0</b>	<b>31.0</b>
Swarthmore	1989	1995	4	2	0	.667	24.0	12.7
Syracuse	1894	1931	0	24	0	.000	1.7	31.6
Thiel	1956	1957	2	0	0	1.000	27.0	10.5
Trinity (Conn.)	1923	1953	3	13	1	.206	7.4	19.8
Tufts	1960	1964	0	2	0	.000	13.5	32.0
<b>UNION</b>	<b>1896</b>	<b>2006</b>	<b>40</b>	<b>48</b>	<b>2</b>	<b>.456</b>	<b>13.5</b>	<b>17.8</b>
Upsala	1926	1969	5	5	0	.500	13.2	8.8
Ursinus	1964	1965	2	0	0	1.000	11.5	7.0
Vermont	1958	1959	1	1	0	.500	12.0	22.5
Wagner	1954	1979	4	2	0	.667	23.2	13.7
Washington & Jefferson	1941	1942	0	2	0	.000	0.0	16.0
Watertown	1901	1902	0	2	0	.000	0.0	33.5
Watertown AA	1899	1899	0	1	0	.000	6.0	18.0
Wesleyan	1922	1922	0	1	0	.000	0.0	14.0
Widener	2000	2000	0	1	0	.000	14.0	40.0
William Paterson	2006	2006	1	0	0	1.000	31.0	27.0
Williams	1929	1930	0	2	0	.000	0.0	56.0
Wooster	1962	1963	1	1	0	.500	14.5	24.0
<b>WPI</b>	<b>2004</b>	<b>2006</b>	<b>3</b>	<b>0</b>	<b>0</b>	<b>1.000</b>	<b>32.7</b>	<b>19.7</b>
<b>Totals</b>			<b>435</b>	<b>449</b>	<b>44</b>	<b>.492</b>	<b>15.4</b>	<b>16.2</b>



**1891 — 2-0-0**  
**Captain:** S. Patten  
 at Canandaigua .....W, 28-0  
 Cornell Frosh .....W, 24-10

**1892 — 1-2-0**  
**Captain:** S. Patten  
 Canandaigua .....W, 32-0  
 St. John's .....L, 4-10  
 at Rochester .....L, 0-40

**1893 — 2-1-1**  
**Captain:** T. Bachman  
 Seneca Falls .....W, 42-0  
 Canandaigua .....T, 0-0  
 Auburn Seminary .....W, 8-0  
 St. John's .....L, 5-16

**1894 — 3-3-2**  
**Captain:** T. Bachman  
 Syracuse .....L, 4-18  
 Seneca Falls .....W, 60-0  
 Rochester .....T, 0-0  
 Elmira .....T, 0-0  
 Elmira .....L, 0-6  
 Rochester .....L, 10-16  
 Starkey Seminary .....W, 34-4  
 Buffalo .....W, 12-6

**1895 — 4-2-4**  
**Captain:** E. Cook  
 Geneva High .....T, 4-4  
 Hamilton .....T, 10-10  
 Colgate .....L, 0-64  
 Cayuga .....T, 0-0  
 Canandaigua .....W, 16-0  
 Rochester .....W, 6-4  
 Hamilton .....W, 1-0  
 Canandaigua .....W, 34-0  
 Cascadilla .....T, 0-0  
 Elmira .....L, 4-15

**1896 — 9-0-3**  
**Captain:** R. Carrier  
 Geneva A.C. ....W, 22-0  
 at Dryden A.C. ....W, 10-4  
 at Clyde A.C. ....W, 6-0  
 at Herkimer A.C. ....W, 12-0  
 at Union .....W, 6-4  
 at Rochester .....W, 22-0  
 Rochester YMCA .....W, 12-6  
 at Elmira A.C. ....T, 0-0  
 at Colgate .....T, 0-0  
 Elmira .....W, 12-6  
 Geneva A.C. ....W, 70-0  
 at Buffalo .....T, 6-6

**1897 — 8-6-0**  
**Captain:** W. Watson  
 Geneva A.A. ....W, 26-4  
 at Syracuse .....L, 0-18  
 at Rochester .....L, 14-16  
 Elmira A.A. ....W, 22-0  
 Rochester .....W, 16-6  
 at Seneca Falls A.A. ....W, 24-0  
 at Auburn A.A. ....W, 10-4  
 at Colgate .....L, 0-18  
 Hamilton .....L, 0-4  
 Geneva A.A. ....W, 32-0  
 at Herkimer A.A. ....W, 11-10  
 at Laureate Boat C. ....W, 11-10  
 at Union .....L, 0-10  
 at Buffalo .....L, 0-28

**1898 — 4-6**  
**Captain:** G. Teller  
 Columbia A.C. ....W, 35-0  
 at Rochester .....L, 5-6  
 Syracuse .....L, 5-45  
 St. John's .....W, 6-0  
 at Hamilton .....L, 0-24  
 at St. John's .....W, 6-5  
 Colgate .....L, 5-11  
 at Union .....L, 6-21  
 at Laureate Boat C. ....L, 0-27  
 at Rochester .....W, 11-2

**1899 — 4-4-2**  
**Captain:** C. Folger  
 Geneva High .....W, 11-5

Auburn A.A. ....W, 11-10  
 Buffalo .....L, 0-51  
 at Genesee Wes. ....L, 0-6  
 Watertown A.A. ....L, 6-18  
 at St. John's .....T, 11-11  
 St. John's .....W, 18-6  
 Genesee Wes. ....T, 23-23  
 Rochester .....L, 0-39  
 at Alfred .....W, 30-11

**1900 — 0-4-0**  
**Captain:** N. Hutton  
 Geneva .....L, 0-6  
 at Colgate .....L, 0-18  
 at Hamilton .....L, 0-39  
 at Rochester .....L, 5-39

**1901 — 3-5-0**  
**Captain:** E. Warner  
 at Hamilton .....L, 0-23  
 at Union .....L, 0-35  
 Rochester .....W, 17-12  
 Genesee Wes. ....W, 42-0  
 Colgate .....L, 10-11  
 at St. Lawrence .....W, 10-0  
 at Watertown .....L, 0-10  
 at Rochester .....L, 6-10

**1902 — 4-8-1**  
**Captain:** J. Whitney  
 at Alfred .....W, 11-6  
 at Cornell .....L, 0-56  
 Rochester .....W, 16-0  
 at Buffalo .....T, 0-0  
 at Colgate .....L, 0-50  
 Hamilton .....L, 6-17  
 Lima .....W, 29-0  
 at St. Lawrence .....L, 6-11  
 at Watertown .....L, 0-57  
 at Carthage .....L, 0-12  
 Alfred .....L, 6-12  
 Alumni .....L, 0-5  
 at Rochester .....W, 6-5

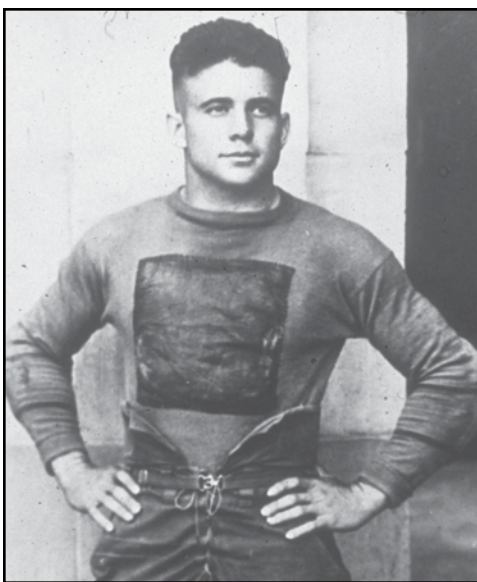
**1903 — 5-3-0**  
**Captain:** J. Maddigan  
 Cortland .....W, 22-6  
 Cook Academy .....W, 5-0  
 at Cornell .....L, 0-12  
 Rochester .....W, 15-5  
 Rochester .....W, 15-5  
 at Hamilton .....L, 0-17  
 Buffalo .....W, 12-0  
 Alfred .....W, 24-6  
 at Rochester .....L, 5-15

**1904 — 3-3-1**  
**Captain:** G. Gutches  
 Cook Academy .....T, 5-5  
 at Cornell .....L, 0-24  
 at Colgate .....L, 0-38  
 Hamilton .....L, 0-16  
 Palmer Institute .....W, 46-0  
 St. Lawrence .....W, 16-0  
 at Alfred .....W, 12-0

**1905 — 5-4-0**  
**Captain:** D. Weeks  
 Starkey Academy .....W, 5-0  
 at Syracuse .....L, 0-24  
 at Cornell .....L, 0-28  
 Cook Academy .....W, 49-0  
 at Rochester .....L, 0-16  
 St. Lawrence .....W, 10-0  
 Alfred .....W, 11-6  
 Clyde .....W, 18-0  
 at Union .....L, 5-15

**1906 — 3-2-1**  
**Captain:** J. Dwinelle  
 Palmer .....W, 11-5  
 at Syracuse .....L, 6-28  
 at Colgate .....W, 28-0  
 at Alfred .....T, 0-0  
 at St. Lawrence .....L, 0-26  
 Rochester .....W, 11-0

**1907 — 4-3-0**  
**Captain:** J. Pertrie  
 at Syracuse .....L, 0-28  
 Starkey Academy .....W, 6-0



*A member of the Hobart Hall of Fame, Dr. Major Wilson Gasper '23 was an outstanding four-sport athlete, earning 13 varsity letters in football, basketball, track, and lacrosse.*

at Alfred .....W, 11-0  
 Niagara .....W, 10-4  
 St. Lawrence .....W, 8-5  
 at Colgate .....L, 5-23  
 at Rochester .....L, 6-11

**1908 — 1-5-0**  
**Captain:** J. Loman  
 at Syracuse .....L, 0-51  
 at Colgate .....L, 0-26  
 Alfred .....W, 6-0  
 Niagara .....L, 5-9  
 at Union .....L, 5-36  
 Rochester .....L, 4-24

**1909 — 2-3-1**  
**Captain:** E. Olmstead  
 at Hamilton .....L, 0-9  
 Lafayette .....L, 0-50  
 Union .....W, 5-3  
 Niagara .....W, 3-0  
 Alfred .....T, 0-0  
 Rochester .....L, 0-1

**1910 — 4-1-1**  
**Captain:** D. Woods  
 Hamilton .....W, 17-0  
 at Rensselaer .....W, 6-5  
 at Syracuse .....L, 5-12  
 at Union .....W, 5-0  
 Alfred .....W, 28-5  
 at Rochester .....T, 0-0

**1911 — 2-4-0**  
**Captain:** A. Barmore  
 at Syracuse .....L, 0-6  
 at Colgate .....L, 0-28  
 at Hamilton .....W, 6-0  
 at Rensselaer .....L, 0-5  
 Union .....W, 10-3  
 Rochester .....L, 0-3

**1912 — 4-4-0**  
**Captain:** H. McCain  
 at Syracuse .....L, 0-12  
 at Union .....L, 6-7  
 at Colgate .....L, 2-12  
 at Rutgers .....L, 7-16  
 Hamilton .....W, 19-0  
 at St. Lawrence .....W, 12-8  
 Alfred .....W, 33-0  
 at Rochester .....W, 20-13

**1913 — 1-5-2**  
**Captain:** H. Hall  
 at Syracuse .....L, 0-41  
 Alfred .....W, 35-0  
 at Colgate .....L, 0-46  
 at Rutgers .....L, 0-71  
 at Hamilton .....T, 0-0  
 at Union .....L, 0-14  
 St. Lawrence .....T, 0-0  
 Rochester .....L, 0-14

**1914 — 1-6-0**  
**Captain:** T. Smith  
 at Syracuse .....L, 0-37  
 at Union .....L, 3-7  
 at St. Lawrence .....L, 0-7  
 Hamilton .....L, 3-14  
 St. Stephen's .....L, 14-16  
 at Alfred .....W, 33-0  
 at Rochester .....L, 3-6

**1915 — 5-0-1**  
**Captain:** T. Smith  
 St. Lawrence .....W, 6-0  
 Alfred .....W, 13-7  
 at Hamilton .....T, 0-0  
 Clarkson .....W, 20-0  
 Rochester .....W, 12-0  
 at Buffalo .....W, 20-6

**1916 — 2-4-1**  
**Captain:** F. Campbell  
 Alfred .....L, 0-33  
 Hamilton .....W, 13-6  
 at St. Lawrence .....L, 0-12  
 St. Michael's .....W, 34-0  
 Rochester .....L, 0-25  
 St. Bonaventure .....T, 0-0  
 at Buffalo .....L, 0-6

**1917 — 0-7-0**  
**Captain:** R. Pepper  
 at Hamilton .....L, 0-26  
 Albany Teachers' .....L, 6-7  
 St. Lawrence .....L, 0-26  
 at Rensselaer .....L, 0-35  
 at Columbia .....L, 0-70  
 Rochester .....L, 0-9  
 at Buffalo .....L, 0-26



**Coach Vincent Welch**  
 1918-29  
 55-15-4, 518

**1918 — 1-2-0**  
**Captain:** L. Gracey  
 Canisius .....W, 13-6  
 at Rochester .....L, 0-29  
 Buffalo .....L, 0-81

**1919 — 4-3-1**  
**Captain:** L. Gracey  
 Rensselaer .....L, 0-7  
 St. Lawrence .....W, 13-6  
 at Union .....L, 0-14  
 at Buffalo .....W, 21-6  
 at St. Lawrence .....L, 0-9  
 Clarkson .....W, 29-0  
 Alfred .....W, 27-7  
 at Rochester .....T, 0-0

**1920 — 3-5-1**  
**Captain:** L. Lohry  
 at Syracuse .....L, 7-55  
 Canisius .....W, 14-0  
 Clarkson .....W, 23-0  
 St. Bonaventure .....L, 7-15  
 St. Lawrence .....L, 0-35  
 at Buffalo .....W, 20-2  
 Rensselaer .....L, 2-12  
 at Union .....L, 7-20  
 at Rochester .....T, 14-14

**1921 — 6-3-0**  
**Captain:** J. Howe  
 at Syracuse .....L, 0-35  
 at NYU .....L, 0-26  
 Niagara .....W, 10-7  
 Clarkson .....W, 24-0  
 at Hamilton .....W, 14-0  
 at Union .....W, 21-7  
 at Rensselaer .....L, 0-21  
 Buffalo .....W, 35-0  
 at Rochester .....W, 14-0

**1922 — 5-4-1**  
**Captain:** M. Gasper  
 at Syracuse .....L, 7-28  
 Niagara .....W, 27-0  
 Rensselaer .....L, 0-6  
 at N.Y.U. ....W, 20-0  
 at Wesleyan .....L, 0-14  
 C.C.N.Y. ....W, 24-0  
 at Union .....T, 7-7  
 at Buffalo .....W, 28-13  
 Clarkson .....W, 14-13  
 at Rochester .....L, 14-15

**1923 — 8-2-0**  
**Captain:** F. Kraus  
 Roch. Sch. Opt. ....W, 39-0  
 at Syracuse .....L, 0-33  
 St. Stephen's .....W, 49-0  
 St. Lawrence .....W, 21-17  
 Trinity .....W, 27-0  
 at C.C.N.Y. ....W, 7-0  
 at Union .....L, 3-7  
 Buffalo .....W, 7-0  
 Niagara .....W, 14-7  
 at Rochester .....W, 10-0

**1924 — 5-4-0**  
**Captain:** F. Daily  
 at Syracuse .....L, 0-35  
 Clarkson .....W, 26-14  
 at Lafayette .....L, 0-30  
 Niagara .....L, 7-13  
 at Colgate .....L, 0-49  
 at Trinity .....W, 21-0

Alfred .....W, 27-6  
 at Buffalo .....W, 13-6  
 at Rochester .....W, 42-17

**1925 — 5-4-0**  
**Captain:** H. Chapman  
 at Syracuse .....L, 0-32  
 at Dartmouth .....L, 0-34  
 Alfred .....W, 36-0  
 Niagara .....W, 6-0  
 Clarkson .....L, 7-19  
 at St. Lawrence .....L, 0-6  
 at Union .....W, 24-13  
 Buffalo .....W, 13-0  
 at Rochester .....W, 13-6

**1926 — 6-3-0**  
**Captain:** P. Vogt  
 at Syracuse .....L, 0-18  
 at Dartmouth .....L, 0-50  
 Upsala .....W, 21-0  
 Union .....W, 21-0  
 at Clarkson .....L, 0-41  
 St. Lawrence .....W, 12-0  
 at Alfred .....W, 18-0  
 at Buffalo .....W, 41-13  
 at Rochester .....W, 13-7

**1927 — 5-4-0**  
**Captain:** O. Budd  
 at Syracuse .....L, 0-13  
 at Dartmouth .....L, 0-46  
 Upsala .....W, 38-0  
 at Union .....L, 13-21  
 Clarkson .....W, 25-0  
 Alfred .....W, 50-0  
 at Colgate .....L, 0-20  
 Buffalo .....W, 49-0  
 at Rochester .....W, 33-7

**1928 — 5-4-0**  
**Captain:** G. Barna  
 at Syracuse .....L, 6-14  
 at Dartmouth .....L, 0-44  
 Union .....W, 30-0  
 Kenyon .....W, 32-0  
 Clarkson .....W, 39-0  
 at Alfred .....W, 26-7  
 at Colgate .....L, 0-21  
 at Buffalo .....W, 38-0  
 at Rochester .....L, 18-20

**1929 — 0-9-0**  
**Captain:** M. Polanski  
 at Syracuse .....L, 0-77  
 at Dartmouth .....L, 0-68  
 at Union .....L, 13-28  
 at Williams .....L, 0-47  
 at Clarkson .....L, 0-25  
 at Hamilton .....L, 6-19  
 Alfred .....L, 7-19  
 Buffalo .....L, 7-13  
 at Rochester .....L, 0-13



**Coach Karl Bohren**  
 1930-31  
 1-17-0, .056

**1930 — 0-9-0**  
**Captain:** L. Galbraith  
 at NYU .....L, 0-35  
 at Syracuse .....L, 0-49  
 St. Lawrence .....L, 0-39  
 at Williams .....L, 0-65  
 Hamilton .....L, 0-6  
 at Alfred .....L, 0-19  
 at Cornell .....L, 0-54  
 at Buffalo .....L, 6-20



at Rochester .....L, 0-28

**1931 — 1-8-0**

**Captain:** G. Puls

at N.Y.U. ....L, 0-65  
 at Syracuse .....L, 0-49  
 St. Lawrence .....L, 0-51  
 at Union .....L, 7-33  
 Kenyon .....L, 7-26  
 Alfred .....L, 0-2  
 Long Island .....L, 6-14  
 Buffalo .....L, 6-29  
 at Rochester .....W, 13-7



**Coach Francis Kraus '24**

1932-33, 1942  
 2-14-4, 518

**1932 — 1-4-2**

**Captain:** S. Seader

at N.Y.U. ....L, 0-33  
 Kenyon .....T, 13-13  
 Union .....L, 6-46  
 at Hamilton .....T, 0-0  
 at Rochester .....W, 6-0  
 Alfred .....L, 0-7  
 at Buffalo .....L, 0-6

**1933 — 1-4-2**

**Captain:** G. Dickinson

at Amherst .....L, 7-38  
 at Union .....L, 0-32  
 Hartwick .....W, 13-0  
 at St. Lawrence .....L, 0-32  
 Hamilton .....L, 12-19  
 at Rochester .....T, 0-0  
 Buffalo .....T, 0-0



**Coach Emerald Wilson**

1934-41  
 30-21-4, 581

**1934 — 2-3-1**

**Captain:** F. Turturro

Dickinson .....T, 12-12  
 Union .....W, 19-6  
 at Hamilton .....L, 6-7  
 St. Lawrence .....L, 6-39  
 at Rochester .....L, 7-20  
 at Buffalo .....W, 19-13

**1935 — 5-2-0**

**Captain:** J. Curtin

Holbrook .....W, 52-0  
 at Union .....W, 7-0  
 Hamilton .....W, 9-7  
 at Trinity .....L, 6-13  
 Kenyon .....W, 38-6  
 at Rochester .....W, 34-14  
 Buffalo .....L, 12-13

**1936 — 6-1-1**

**Captains:** J. Cozzens, F. King  
 at Amherst .....T, 0-0  
 Union .....W, 26-0  
 at Hamilton .....W, 33-0

## The Statesmen Nickname

Sports have been played at the College since the 1860s and for the first 70-plus years Hobart went without a moniker. Now Hobart College is blessed with an unusual and unique nickname, "The Statesmen."

The origin of Hobart's nickname came innocently enough. The football team was playing the opening game of the 1936 football season on Sept. 26, at Amherst College. The following day, *The New York Times* published a story describing the scoreless tie that occurred between the two teams. The article begins:

*"In the Pratt Field opener today, Hobart and Amherst battled to a scoreless tie before a crowd of 3,000. The defensive play of both teams was superb. Hobart recorded eight first downs to Amherst's nine.*

*"The statesmen from Geneva received a lucky break in the first period when Wanzo fumbled and Benjamin recovered on Amherst's 40-yard line."*

The author of the story referred to Hobart as the statesmen one final time, concluding the story with:

*"Snowball and Pagnotta stood out for Amherst, while Bowling and Wright excelled for the statesmen."*

And with those two references, Hobart College had a nickname.



The 1936 Hobart "Statesmen"

Trinity .....W, 26-6  
 Denison .....W, 26-0  
 at Rochester .....W, 21-13  
 at Buffalo .....W, 52-2  
 at Army .....L, 7-51

**1937 — 5-2-0**

**Captains:** H. Miller, D. Narraway

Upsala .....W, 7-0  
 at Union .....L, 0-9  
 Hamilton .....W, 19-14  
 at Trinity .....L, 0-7  
 C.C.N.Y. ....W, 13-7  
 at Rochester .....W, 19-0  
 Buffalo .....W, 12-7

**1938 — 3-1-2**

**Captain:** W. Dickson

Norwich .....L, 0-20  
 at Hamilton .....T, 13-13  
 Trinity .....T, 6-6  
 Kenyon .....W, 19-13  
 at Rochester .....W, 40-0  
 at Buffalo .....W, 19-0

**1939 — 4-3-0**

**Captain:** R. Ferris

Norwich .....L, 13-25  
 Kenyon .....W, 20-0  
 Hartwick .....W, 26-0  
 at Trinity .....L, 0-13  
 Kent State .....L, 6-8

Buffalo .....W, 20-0  
 at Rochester .....W, 23-0

**1940 — 4-3-0**

**Captains:** J. Cozzens, D. Popalisky

at Amherst .....L, 7-32  
 Union .....L, 0-13  
 at Hamilton .....W, 20-13  
 Trinity .....L, 6-14  
 Kenyon .....W, 42-0  
 at Buffalo .....W, 19-7  
 at Rochester .....W, 18-7

**1941 — 1-6-0**

**Captain:** R. Weber

at Union .....W, 13-0  
 Hamilton .....L, 12-27  
 Trinity .....L, 7-25  
 Wash. & Jeff. ....L, 0-7  
 at C.C.N.Y. ....L, 0-6  
 Buffalo .....L, 7-12  
 at Rochester .....L, 7-19

**1942 — 0-6-0**

**Captains:** D. Palmer, W. Stiles

Union .....L, 7-32  
 at Hamilton .....L, 7-32  
 at Wash. & Jeff. ....L, 0-25  
 C.C.N.Y. ....L, 6-20  
 at Buffalo .....L, 0-66  
 at Rochester .....L, 0-59

**1943-45**

No team, World War II



**Coach J. Edward Tryon**

1946-62  
 64-56-6, 540

**1946 — 1-5-0**

**Captain:** A. Stertzer

Buffalo .....L, 7-20  
 at Trinity .....L, 14-21  
 Union .....L, 7-19  
 at Hamilton .....L, 6-7  
 Niagara .....L, 0-25  
 at Rochester .....W, 12-0

**1947 — 4-3-1**

**Captain:** A. Hill

at Middlebury .....L, 6-13  
 at Sampson .....W, 12-0  
 at Buffalo .....L, 0-54  
 Trinity .....L, 7-25

at Union .....W, 6-0  
 Hamilton .....W, 19-7  
 Kenyon .....W, 12-0  
 at Rochester .....T, 7-7

**1948 — 3-5-0**

**Captain:** C. Remilen

Middlebury .....L, 13-31  
 at Buffalo .....L, 0-39  
 St. Lawrence .....W, 20-14  
 at Trinity .....L, 0-52  
 Union .....L, 0-25  
 at Hamilton .....L, 0-13  
 at Kenyon .....W, 24-0  
 Sampson .....W, 24-0

**1949 — 3-4-0**

**Captain:** G. Small

Brockport .....L, 6-30  
 at St. Lawrence .....L, 12-42  
 Trinity .....L, 0-42  
 at Union .....L, 0-39  
 Hamilton .....W, 27-25  
 Kenyon .....W, 41-7  
 Alfred .....W, 14-6

**1950 — 3-4-0**

**Captain:** F. Rice

at Columbia .....L, 12-42  
 St. Lawrence .....L, 13-20  
 at Trinity .....L, 6-21  
 at Kenyon .....L, 20-34  
 Union .....W, 33-0  
 at Haverford .....W, 28-13  
 Hamilton .....W, 21-7

**1951 — 3-3-0**

**Captain:** L. Letizia

at St. Lawrence .....L, 7-20  
 Trinity .....L, 0-26  
 Kenyon .....W, 26-14  
 at Union .....L, 6-27  
 Haverford .....W, 41-6  
 at Hamilton .....W, 14-6

**1952 — 3-2-2**

**Captain:** W. Michels

Brooklyn .....W, 48-12  
 at Trinity .....L, 0-34  
 Allegheny .....W, 26-7  
 at Kenyon .....L, 13-14  
 Union .....W, 13-7  
 at Hamilton .....T, 6-6  
 Alfred .....T, 20-20

**1953 — 5-1-0**

**Captain:** T. Olney

at Brooklyn .....W, 20-0  
 Trinity .....L, 0-32  
 at Allegheny .....W, 19-12  
 Kenyon .....W, 61-0  
 at Union .....W, 19-13  
 Hamilton .....W, 19-0

**1954 — 8-0-0**

**Captain:** W. Morton

Wagner .....W, 40-6  
 at Allegheny .....W, 32-7  
 Buffalo .....W, 45-0  
 at Kenyon .....W, 32-0  
 Union .....W, 32-21  
 at St. Lawrence .....W, 20-6  
 Hamilton .....W, 42-7  
 Alfred .....W, 13-6

**1955 — 6-1-1**

**Captain:** D. Gates

at Wagner .....W, 14-7  
 Allegheny .....W, 44-7  
 at Buffalo .....T, 0-0  
 Kenyon .....W, 53-0  
 at Union .....W, 25-14  
 St. Lawrence .....W, 26-14  
 at Hamilton .....L, 19-0  
 Alfred .....L, 0-6

**1956 — 7-1-0**

**Captain:** W. Harrison

at Allegheny .....W, 26-6  
 Rochester .....W, 20-0

Thiel .....W, 33-7  
 at Kenyon .....W, 33-0  
 Union .....L, 7-20  
 at St. Lawrence .....W, 54-0  
 Hamilton .....W, 21-20  
 Buffalo .....W, 33-12

**1957 — 6-0-0**

**Captain:** E. Lisi

Allegheny .....W, 26-7  
 at Rochester .....W, 27-20  
 at Thiel .....W, 21-14  
 St. Lawrence .....W, 40-7  
 at Hamilton .....W, 8-2  
 Upsala .....W, 19-0

**1958 — 4-2-1**

**Captain:** D. Dahowski

at St. Lawrence .....W, 20-7  
 Rochester .....L, 0-24  
 Vermont .....W, 18-14  
 at Hamilton .....W, 13-8  
 Union .....W, 42-0  
 Hamilton .....T, 12-12  
 at Upsala .....L, 12-27

**1959 — 3-4-1**

**Captain:** D. Hoexter

St. Lawrence .....L, 8-21  
 at Rochester .....L, 7-34  
 at Vermont .....L, 6-31  
 Alfred .....W, 19-0  
 at Union .....T, 0-0  
 C.W. Post .....W, 13-0  
 at Hamilton .....L, 7-12  
 Upsala .....W, 7-6

**1960 — 4-4-0**

**Captains:** G. Grass, R. Tierney  
 at C.W. Post .....L, 0-13  
 Rochester .....W, 6-0  
 Hamilton .....L, 0-6  
 at Alfred .....L, 0-13  
 Union .....W, 21-20  
 at St. Lawrence .....W, 22-12  
 Tufts .....L, 6-26  
 at John Carroll .....W, 7-6

**1961 — 0-8-0**

**Captain:** J. Adkinson

Ithaca .....L, 6-19  
 at Rochester .....L, 6-27  
 at Hamilton .....L, 6-12  
 Alfred .....L, 13-16  
 at Union .....L, 13-39  
 St. Lawrence .....L, 7-23  
 at Susquehanna .....L, 6-35  
 John Carroll .....L, 0-6

**1962 — 1-7-0**

**Captain:** T. Bevins II

at Upsala .....L, 3-8  
 Rochester .....L, 0-14  
 Hamilton .....L, 13-26  
 at Alfred .....L, 6-26  
 Union .....W, 14-6  
 at Wooster .....L, 15-48  
 St. Lawrence .....L, 7-34  
 at Merchant Marine .....L, 0-7



**Coach Alva Kelley**

1963-70  
 20-41-3, 335

**1963 — 4-3-1**

**Captains:** R. McKay, J. Richardson

Upsala .....L, 7-22



## Teams Of Distinction

In 2006, the SAA Board of Directors created a team recognition award—*Teams of Distinction*—to pay tribute to Hobart intercollegiate teams of the past for their outstanding achievements in the athletic arena and for their contributions to the athletic legacy of Hobart College. Along with a pair of undefeated lacrosse teams, the undefeated 1954 (top) and 1957 (bottom) football teams share the honor of being the first Teams of Distinction, recognized at the Hobart Hall of Fame Dinner on Nov. 3, 2006.



at Rochester ..... T, 20-20  
at Hamilton ..... L, 20-26  
Alfred ..... W, 3-0  
at Union ..... W, 17-0  
Wooster ..... W, 14-0  
at St. Lawrence ..... W, 29-8  
Merchant Marine ..... L, 13-26

### 1964 — 3-4-1

**Captain:** A. Soanes

at Rensselaer ..... W, 18-3  
Rochester ..... L, 20-38  
Hamilton ..... T, 6-6  
at Alfred ..... L, 8-41  
Union ..... W, 19-13  
at Ursinus ..... W, 8-7  
St. Lawrence ..... L, 8-21  
at Tufts ..... L, 21-38

### 1965 — 4-4-0

**Captains:** J. Arnitz,  
J. Marchitell

Rensselaer ..... W, 27-6  
at Rochester ..... L, 13-14  
at Hamilton ..... L, 14-34  
Alfred ..... L, 3-35  
at Union ..... W, 35-14  
Johns Hopkins ..... W, 27-14  
at St. Lawrence ..... L, 6-28  
Ursinus ..... W, 15-7

### 1966 — 3-5-0

**Captains:** E. Christenson,  
J. McVey

at Alfred ..... L, 6-20  
St. Lawrence ..... L, 6-42  
Hamilton ..... W, 25-24  
at Cortland ..... L, 8-15  
Union ..... W, 7-6  
at Johns Hopkins ..... W, 41-6  
at Rensselaer ..... L, 20-29  
Susquehanna ..... L, 14-27

### 1967 — 0-7-1

**Captains:** M. Hanna, A. Ward  
Alfred ..... L, 15-20  
at St. Lawrence ..... T, 14-14  
at Hamilton ..... L, 0-28  
Cortland ..... L, 14-18  
at Union ..... L, 15-37  
at Grove City ..... L, 6-28  
Rensselaer ..... L, 24-33  
Muskingum ..... L, 6-21

### 1968 — 3-5-0

**Captains:** M. Perkins,  
J. Taney III

Upsala ..... L, 6-7  
at St. Lawrence ..... L, 6-42  
Hamilton ..... W, 12-0  
at Alfred ..... W, 14-7  
Union ..... L, 6-14  
Grove City ..... L, 27-32  
at Rensselaer ..... W, 21-7  
at Muskingum ..... L, 0-6

### 1969 — 3-5-0

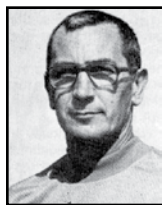
**Captain:** T. Lucas

at Upsala ..... L, 12-18  
St. Lawrence ..... L, 10-27  
at Hamilton ..... W, 44-12  
Alfred ..... L, 19-20  
at Union ..... W, 35-21  
Merchant Marine ..... L, 6-35  
Rochester ..... L, 3-7  
at Rensselaer ..... W, 39-7

### 1970 — 0-8-0

**Captains:** B. Guccia,  
J. Porter, C. Yonkin  
Kenyon ..... L, 10-21  
at St. Lawrence ..... L, 14-27  
Hamilton ..... L, 0-10  
at Alfred ..... L, 22-31  
Union ..... L, 14-17  
at Merchant Marine ..... L, 14-27

at Rochester ..... L, 20-27  
Rensselaer ..... L, 14-19



**Coach George Davis**

1971-76  
37-16-1, 694

### 1971 — 5-4-0

**Captains:** R. Dye, G. Wulster  
at Kenyon ..... W, 27-14  
St. Lawrence ..... W, 28-24  
Hamilton ..... W, 28-20  
Alfred ..... L, 21-28  
at Union ..... W, 40-21  
at Colby ..... L, 33-38  
Drexel ..... W, 35-8  
at Rensselaer ..... L, 14-21  
Rochester ..... L, 14-41

### 1972 — 7-2-0

**Captains:** W. Blynt, R. Raleigh  
Rensselaer ..... W, 47-0  
RIT ..... W, 60-13  
at Mount Union ..... W, 21-10  
at St. Lawrence ..... W, 26-7  
Hamilton ..... W, 26-14  
at Alfred ..... L, 28-31  
Union ..... W, 28-21  
Colby ..... W, 49-0  
at Ithaca ..... L, 7-17

### 1973 — 7-1-1

**Captains:** D. Dinolfo,  
M. Newton

at Rensselaer ..... W, 29-0  
at RIT ..... T, 14-14  
Mount Union ..... W, 28-7  
St. Lawrence ..... W, 24-6  
at Hamilton ..... W, 35-0  
Alfred ..... W, 30-28  
at Union ..... W, 37-14  
at Colby ..... W, 26-7  
Ithaca ..... L, 15-36

### 1974 — 8-1-0

**Captains:** J. Hanley, T. Korn  
Rensselaer ..... W, 20-6  
RIT ..... W, 38-7  
at Denison ..... W, 17-7  
at St. Lawrence ..... W, 39-23  
Hamilton ..... W, 41-27  
at Alfred ..... L, 0-16  
Union ..... W, 29-18  
Colby ..... W, 21-7  
at Brockport ..... W, 41-6

### 1975 — 5-4-0

**Captains:** H. Janczyk,  
R. Kowalski

at Rensselaer ..... W, 30-7  
at RIT ..... W, 55-37  
Denison ..... W, 3-0  
St. Lawrence ..... L, 7-27  
at Hamilton ..... W, 42-15  
Alfred ..... L, 13-14  
at Union ..... W, 21-0  
at Ithaca ..... L, 29-36  
Coast Guard ..... L, 14-20

### 1976 — 5-4-0

**Captains:** G. Pratt,  
T. Schardt, J. Thon

RIT ..... W, 44-16  
at Wagner ..... W, 31-13  
at St. Lawrence ..... L, 28-35  
Rochester ..... L, 0-17  
at Alfred ..... L, 6-20  
Union ..... W, 28-22  
Ithaca ..... L, 20-27  
at Coast Guard ..... W, 28-15  
Rensselaer ..... W, 41-20



**Coach Dave Urick**

1977-80  
14-20-1, 414

### 1977 — 7-2-0

**Captains:** H. Mulcahey,  
T. Schardt

at RIT ..... W, 28-0  
Wagner ..... W, 35-14  
St. Lawrence ..... W, 20-19  
at Rochester ..... L, 15-29  
Alfred ..... W, 17-14  
at Union ..... W, 25-21  
at Ithaca ..... L, 14-31  
Brockport ..... W, 55-14  
at Rensselaer ..... W, 36-6

### 1978 — 2-6-0

**Captains:** P. Brady, D. Youker  
at Wagner ..... L, 8-13  
at St. Lawrence ..... L, 29-35  
at Alfred ..... L, 0-27  
Union ..... W, 17-7  
Rochester ..... L, 6-24  
Ithaca ..... L, 0-49  
at Brockport ..... L, 0-25  
Rensselaer ..... W, 22-0

### 1979 — 4-5-0

**Captains:** E. Cooney,  
B. Whalen, S. Wood

Albany ..... L, 0-15  
Wagner ..... L, 11-29  
St. Lawrence ..... W, 20-7  
at Rochester ..... L, 3-14  
Alfred ..... L, 22-28  
at Union ..... W, 24-17  
at Cortland ..... W, 17-16  
Brockport ..... L, 13-14  
at Rensselaer ..... W, 13-9

### 1980 — 1-7-1

**Captains:** D. Dalton, R.

Palmer, P. Plunkett, P. Tumulty  
Cortland ..... L, 7-12  
at Buffalo ..... L, 0-6  
at St. Lawrence ..... W, 13-12  
Rochester ..... L, 3-7  
at Alfred ..... L, 14-28  
at Canisius ..... L, 7-32  
Ithaca ..... L, 6-21  
at Brockport ..... L, 10-34  
Rensselaer ..... T, 13-13



**Coach Jack Daniels**

1981-86  
25-28-1, 472

### 1981 — 1-8-0

**Captains:** M. Collins,  
E. Dunn, T. Gray

at Cortland ..... L, 20-21  
Buffalo ..... L, 10-41  
St. Lawrence ..... L, 3-20  
at Rochester ..... L, 0-20  
Alfred ..... L, 7-21  
at Hamilton ..... W, 34-8  
at Ithaca ..... L, 31-37  
Brockport ..... L, 0-21  
at Rensselaer ..... L, 14-41

### 1982 — 4-5-0

**Captains:** R. Tretter, J. Warner  
Cortland ..... W, 14-10  
at Union ..... L, 14-49  
St. Lawrence ..... L, 16-31  
Rochester ..... W, 27-14  
at Alfred ..... L, 10-13  
Hamilton ..... L, 12-20  
at Ithaca ..... L, 14-38  
at Brockport ..... W, 21-12  
Rensselaer ..... W, 52-7

### 1983 — 5-3-1

**Captains:** R. Hess, M. Koenig,  
J. Tretter, G. Vivian

at Iona ..... W, 37-6  
Union ..... L, 0-23  
at St. Lawrence ..... L, 0-17  
at Rochester ..... W, 22-8  
Alfred ..... T, 7-7  
at Hamilton ..... W, 49-29  
Ithaca ..... W, 23-20  
Hofstra ..... L, 14-24  
at Rensselaer ..... W, 33-12

### 1984 — 5-4-0

**Captains:** K. Barna,  
R. Ordines

Iona ..... W, 34-7  
at Union ..... L, 0-24  
St. Lawrence ..... W, 21-13  
Rochester ..... W, 28-7  
at Alfred ..... L, 9-21  
Buffalo State ..... W, 44-10  
at Ithaca ..... L, 13-14

at Hofstra ..... L, 22-27  
Rensselaer ..... W, 41-12

### 1985 — 5-4-0

**Captains:** W. Rogers, T. Rosa  
Union ..... L, 0-12  
at Cortland ..... W, 16-3  
at St. Lawrence ..... L, 12-16  
at Rochester ..... W, 28-14  
Alfred ..... W, 16-14  
at Buffalo State ..... W, 27-3  
Ithaca ..... L, 12-15  
Hofstra ..... W, 23-6  
at Rensselaer ..... L, 20-33

### 1986 — 5-4-0

**Captains:** D. Adams,  
B. Frydman

at Union ..... L, 6-7  
Cortland ..... W, 26-6  
St. Lawrence ..... W, 20-3  
Rochester ..... W, 30-3  
at Alfred ..... L, 7-12  
Canisius ..... W, 28-3  
at Ithaca ..... L, 3-28  
at Hofstra ..... L, 7-21  
Rensselaer ..... W, 25-10



**Coach Dick Taylor**

1987-90  
5-34-0, 128

### 1987 — 2-8-0

**Captains:** B. Levy, T. Schmidt  
Plymouth State ..... W, 10-0  
at Cortland ..... W, 24-14  
at Union ..... L, 3-18  
at St. Lawrence ..... L, 9-10  
at Rochester ..... L, 0-17  
Alfred ..... L, 14-21  
at Canisius ..... L, 0-35  
Ithaca ..... L, 24-33  
Hofstra ..... L, 6-20  
at Rensselaer ..... L, 10-24

### 1988 — 0-9-0

**Captains:** M. Capone,  
F. Fedorjaka

Cortland ..... L, 6-29  
at Union ..... L, 7-21  
St. Lawrence ..... L, 13-30  
Rochester ..... L, 0-29  
at Alfred ..... L, 7-48  
Canisius ..... L, 9-16  
at Ithaca ..... L, 0-58  
at Hofstra ..... L, 7-28  
Rensselaer ..... L, 24-28

### 1989 — 2-8-0

**Captains:** J. Nickson,  
B. Richter

at Swarthmore ..... W, 30-12  
at Cortland ..... L, 0-17  
Union ..... L, 7-21  
at St. Lawrence ..... L, 23-31  
at Rochester ..... L, 14-42  
Alfred ..... L, 14-28  
at Canisius ..... L, 0-17  
Ithaca ..... L, 7-63  
Gannon ..... W, 13-0  
at Rensselaer ..... L, 10-21

### 1990 — 1-9-0

**Captains:** C. Petino,  
J. Treder, D. Papa  
Swarthmore ..... L, 6-16  
at Gannon ..... L, 10-20  
at Union ..... L, 10-59



ANDREW T. MALIANA



## Blakowski '07 wins gold with Team USA at IFAF World Championship

Two-time All-American running back Doug Blakowski '07 and Team USA captured the gold medal at the 2007 World Championship of American Football with a 23-20 double overtime win against two-time defending champion and host nation, Japan. One of only nine Division III players selected to Team USA's roster, he carried the ball 10 times for 55 yards in the triumph.

Against Japan, Team USA found itself in a dogfight following a seemingly easy jaunt through pool play. In wins over Korea and Germany, the Americans outscored their foes 110-7.

*Blakowski gained 55 yards during the gold medal game against the host nation, Japan.*

In the title bout, 31 of Blakowski's 55 yards came on the game-tying drive. His final carry in regulation was a 12-yard gain to the Japan 5. Team USA tied the game on the next play to force OT.

In the decisive overtime session, Blakowski again played a key role. He gained 9 yards on first and 10 from the 15 yard line, setting the stage for the gold medal-winning 22-yard field goal three plays later.

Blakowski finished the tournament with 125 yards rushing and two touchdowns on 23 carries, an average of 5.4 yards per carry.

As a Statesman, Blakowski rushed for over 1,000 yards in each of his two seasons as a starter and was a two-time All-Liberty League selection.



ANDREW T. MALIANA

*Blakowski scored a pair of TDs during the international tournament, including this one against Germany.*

St. Lawrence.....	L, 21-45
St. John Fisher.....	W, 21-14
at Alfred.....	L, 10-37
Canisius.....	L, 37-42
at Pace.....	L, 20-24
at Buffalo State.....	L, 7-45
Rensselaer.....	L, 6-7

Swarthmore.....	W, 20-13
at Alfred.....	W, 19-14
Pace.....	W, 27-6
Buffalo State.....	W, 10-0
at Rensselaer.....	L, 15-20

### 1994 — 3-7-0

**Captains:** R. Bimson,

M. Bower, G. Irvin, J. Sweatt	
Dickinson.....	L, 14-28
at St. John Fisher.....	L, 10-31
at Union.....	L, 14-42
St. Lawrence.....	W, 27-23
at Rochester.....	W, 21-0
at Swarthmore.....	W, 24-6
Alfred.....	L, 21-35
Ithaca.....	L, 10-14
at Hartwick.....	L, 20-42
Rensselaer.....	L, 20-41



### Coach Bill Maxwell

1991-94  
17-23-0, 425

### 1991 — 3-7-0

<b>Captains:</b> T. deLoe, R. Paliana	
Buffalo State.....	L, 0-34
at Swarthmore.....	L, 13-29
Union.....	L, 17-44
at St. Lawrence.....	L, 0-41
Alfred.....	L, 10-30
Assumption.....	W, 36-15
at Canisius.....	L, 9-34
Pace.....	W, 19-14
at Rensselaer.....	L, 15-16
at St. John Fisher.....	W, 35-14



### Coach Mike Cragg

1995-  
81-39-0, 732

### 1995 — 4-6-0

<b>Captains:</b> C. Griswold, A. Pohl	
Dickinson.....	L, 14-31
St. John Fisher.....	W, 1-0
Union.....	L, 15-39
at St. Lawrence.....	W, 20-16
Rochester.....	L, 17-26
Swarthmore.....	W, 51-0
at Alfred.....	L, 14-35
at Ithaca.....	L, 22-43
Hartwick.....	W, 27-23
at Rensselaer.....	L, 28-40

### 1996 — 5-5-0

**Captains:** A. Aguilar,

J. Dailey, G. Helmer	
Dickinson.....	L, 14-40
at St. John Fisher.....	L, 28-35
at Union.....	L, 22-24
St. Lawrence.....	W, 26-25
at Rochester.....	W, 35-13
at Franklin & Marshall.....	L, 24-34
Alfred.....	W, 31-26

Ithaca.....	L, 14-21
at Hartwick.....	W, 42-27
Rensselaer.....	W, 36-35 ot

### 1997 — 6-4-0

**Captains:** D. Russell,

E. Schiller, T. Zee	
at Dickinson.....	W, 26-13
Union.....	L, 17-28
St. John Fisher.....	W, 38-7
at St. Lawrence.....	W, 57-0
Rochester.....	W, 48-14
Franklin & Marshall.....	W, 10-7
at Alfred.....	W, 58-19
at Ithaca.....	L, 13-35
Hartwick.....	L, 30-31
at Rensselaer.....	L, 14-16

### 1998 — 6-3-0

**Captains:** J. Martinek,

T. O'Brien	
Dickinson.....	L, 9-15
at Union.....	W, 19-14
St. Lawrence.....	W, 41-14
at Rochester.....	W, 14-6
at Franklin & Marshall.....	W, 13-8
Alfred.....	W, 40-3
Ithaca.....	L, 17-30
at St. John Fisher.....	W, 24-7
Rensselaer.....	L, 27-31

### 1999 — 5-4-0

**Captains:** A. Backhaus,

K. Brandon, E. Newsome	
at Dickinson.....	L, 20-32
Union.....	L, 14-20
at St. Lawrence.....	W, 28-10
Rochester.....	W, 48-21
Franklin & Marshall.....	W, 35-7
at Alfred.....	W, 29-20
at Ithaca.....	L, 13-44
St. John Fisher.....	W, 16-0
at Rensselaer.....	L, 6-17

### 2000 — 8-1-0

**\*NCAA Postseason — 1-1-0**

**Captains:** M. Amodeo,

K. Brandon, R. Gould, E. Newsome	
Dickinson.....	W, 28-13
at Rochester.....	L, 0-14
at Union.....	W, 13-12
St. Lawrence.....	W, 41-7
at Franklin & Marshall.....	W, 28-10
Alfred.....	W, 20-14
Ithaca.....	W, 19-0
at St. John Fisher.....	W, 35-10
Rensselaer.....	W, 27-0
*Bridgewater State.....	W, 25-0

\*at Widener.....L, 14-40

### 2001 — 6-3-0

**Captains:** R. Lopez,

E. McLean	
at Dickinson.....	W, 6-2
Union.....	L, 6-42
at St. Lawrence.....	W, 47-0
Rochester.....	W, 38-12
Franklin & Marshall.....	W, 44-0
at Alfred.....	W, 24-21
at Ithaca.....	L, 13-52
St. John Fisher.....	W, 28-18
at Rensselaer.....	L, 29-35

### 2002 — 8-2-0

**\*NCAA Postseason — 0-1-0**

**Captains:** T. Booth, M. Daley,

E. McLean, C. Swanson	
Dickinson.....	W, 27-3
at Union.....	W, 14-6
St. Lawrence.....	W, 44-14
at Rochester.....	W, 59-21
at Franklin & Marshall.....	W, 35-21
Alfred.....	W, 25-19 (2ot)
Ithaca.....	W, 17-6
at St. John Fisher.....	L, 14-17
Rensselaer.....	W, 34-27
*John Carroll.....	L, 7-27

### 2003 — 6-4-0

**ECAC North Atlantic Bowl Champions**

**Captains:** C. Purtell, C. Swanson, D. Szentesy

at Dickinson.....	L, 16-17
Union.....	W, 35-3
at St. Lawrence.....	W, 28-10
Rochester.....	L, 13-17
Franklin & Marshall.....	W, 28-20
at Alfred.....	W, 20-12
at Ithaca.....	L, 7-14
St. John Fisher.....	L, 12-20
at Rensselaer.....	W, 43-25
Norwich.....	W, 34-18

### 2004 — 9-2-0

**\*NCAA Postseason — 1-1-0**

**Captains:** A. Bell, W. Bennett,

T. Godinho, C. Purtell	
Dickinson.....	W, 31-10
at Franklin & Marshall.....	L, 14-35
at Rensselaer.....	W, 54-13
WPI.....	W, 55-38
Coast Guard.....	W, 31-2
at Merchant Marine.....	W, 35-6
at St. Lawrence.....	W, 21-10
Union.....	W, 33-27 (OT)
Rochester.....	W, 41-20
*Curry.....	W, 35-16
*at Rowan.....	L, 14-45

### 2005 — 9-2-0

**\*NCAA Postseason — 1-1-0**

**Captains:** J. Anderson,

C. Feane, N. Robinson	
at Dickinson.....	W, 21-0
Franklin & Marshall.....	W, 34-0
Rensselaer.....	W, 56-48 (3OT)
at WPI.....	W, 24-7
at Coast Guard.....	W, 42-13
Merchant Marine.....	W, 27-9
St. Lawrence.....	W, 13-9
at Union.....	L, 18-28
at Rochester.....	W, 42-25
*Cortland.....	W, 23-22
*at Delaware Valley.....	L, 14-21

### 2006 — 8-2-0

**\*NCAA Playoffs — 0-1-0**

**Captains:** D. Blakowski, S. Mizro, N. Robinson, J. Sanders

Dickinson.....	W, 31-28
at William Paterson.....	W, 31-27
at Rensselaer.....	W, 24-17
WPI.....	W, 19-14
at Merchant Marine.....	W, 30-19
at St. Lawrence.....	W, 27-7
at Alfred.....	W, 21-14
Union.....	L, 14-31
Rochester.....	W, 31-21
*at Rowan.....	L, 18-20



KEVIN COLTON

*Alex Bell '05 was a consensus All-American and signed with the New York Giants after graduation.*